

CIF SS

HIGH JUMP

1913	Luther Nichols, Pomona	6-0	Innes Gates, Hollywood	Paul Anderson, Santa Ana			
1914	Neil Creighton, Manual Arts	5-11	Paul Anderson, Santa Ana	Lyall Webster, Santa Paula			
1915	Earl Thomson, LB Poly Hastings Bidwell, Glendale	6-1 3/4		Millard Webster, Santa Paula	---- Arnett, Chaffey Watson Beggs, Manual Arts Don Stewart, Manual Arts		
1916	Titus Moore, Pasadena	5-11 1/4	---- Brant, Hollywood	Howard Draper, San Bern	Harold "Brick" Muller, San Diego		
1917	Oliver Corey, Chaffey	5-8	Lloyd Rogers, Ventura	Howard Draper, San Bern	---- Reynolds, Bonita		
1918	Harold "Brick" Muller, San Diego	6-0	Howard Draper, San Bern	R---- Hine, Santa Paula	Cliff Lee, Pasadena		
1919	Al Nichols, Santa Paula	5-8	---- Shaw, Monrovia	---- Hunter, Antelope Valley	---- Bradshaw, San Bern		
1920	Cliff Argue, Oxnard	5-9 1/2	---- Rose, San Diego	Oliver Corey, Chaffey	Bob Sencerbox, Lincoln		
1921	Alvin Fisher, Lincoln	5-10	Ralph Bennett, Santa Paula	Bob Sencerbox, Lincoln	Dick Blewett, Manual Arts		
1922	Ed Shaw, Monrovia	5-10 1/2	---- Sterbar, Lompoc	Chester Bickmore, Hunt.Beach	Bernard Ryder, Hollywood	Dick Blewett, Manual Arts	
1923	Harold Turner, Hollywood	6-0 3/4	Ross Nichols, Hunt.Beach	Cecil Myers, Chaffey	Cliff Reynolds, Los Angeles	Marion Shaver, Covina Chester Bickmore, Hunt.Beach Herschel Bonham, Pomona	
1924	Harry Coggeshall, Poly	6-2	Les Eades, Hollywood Al Bowen, Santa Monica		Ross Nichols, Hunt.Beach	Morris Walker, Hemet Way Wayne Gilchrist, Hunt.Beach	
1925	Al Bowen, Santa Monica	5-10	Bob Larson, Pasadena	Hal Ramser, San Diego	---- Soten, San Pedro	Don Sperry, San Bernardino	
1926	Merrill Hershey, La Puente	5-11	Bob Van Osdel, Compton Rob Williams, Lincoln ---- Parker, Jordan			Don Schoenberger, Poly ---- Edwards, Jefferson Karl Tintinger, Manual Arts	
1927	Bob Van Osdel, Compton ---- Wilson, Hemet	5-10		Don Schoenberger, Poly	---- McArthur, Hollywood	Osborne Ofstad, Hollywood ---- Duncan, Alhambra	
1928	Bob Van Osdel, Compton	6-3	Henry Lassalette, Puente	Darby Jones, Poly	---- Miller, Hollywood ---- McDowell, Monrovia		
1929	Darby Jones, Poly	6-1	Al Hammar, Manual Arts 6-0	William Brannen, Belmont ---- Reed, San Diego 5-10		Hunter Bergner, Fairfax Bill "Red" Linn, LB Wilson 5-9	
1930	Bill "Red" Linn, LB Wilson	6-1	Neil McNeil, Inglewood ---- Weber, Santa Monica John Sanchez, Montebello Bob Vignolo, Poly				

1931	Cornelius Johnson, Los Angeles	6-2	Paul Jacques, Santa Ana 6-1	Bill Fox, Belmont Bob Heigold, Huntington Park 6-0		Otis Grady, Manual Arts Hal Baranov, Los Angeles Dave Meek, Chaffey 5-10	
1932	Cornelius Johnson, Los Angeles	6-3 1/2	Bill Fox, Belmont 6-2	Joe Garnichard, San Pedro 6-0	Bob Pollard, Downey 5-11	Otis Grady, Manual Arts George Wadey, Glendale ----- Jonosek, Pomona Tom Collier, LB Poly Don Vorhees, LB Poly 5-9	
1933	Cornelius Johnson, Los Angeles	6-4	George Anderson, Gardena Otis Stanton, Jordan 6-3		----- McPhatter, Brawley Joe Garnichard, San Pedro 6-1		
1934	Delos Thurber, Glendale	6-5 1/4	Joe Garnichard, San Pedro Jim McDaniel, Manual Arts 6-4 1/2		Otis Stanton, Jordan Lou Baehr, Fairfax 6-2		
1935	Jim McDaniel, Manual Arts	6-3	Russ Huffine, Compton Bill Cunningham, Muir 6-2		Allan Barlow, Lincoln Gerald Guildner, Hoover Orrin Bowers, Huntington Park ----- Keller, Los Angeles 6-0		
1936	Walter Laughead, LB Wilson Eldon Lippincott, LB Poly	6-3		Jim Lincoln, Santa Paula Pete Keene, Hoover 6-2		Bill Brock, Muir 6-1	
1937	Guinn Smith, Glendale Jerry Soule, La Jolla	6-3		Don Miles, LB Wilson Dallas Carter, Hunt Beach 6-2		Jack Schilling, Beverly Hills Gil LaCava, Beverly Hills Walter Laughead, LB Wilson	
1938	Gil LaCava, Beverly Hills	6-4 1/2	Bob Logan, San Diego Wendell Tedrow, Santa Ana Bob White, Excelsior 6-1		Dick Homeyer, Beverly Hills Al Cordray, SD Hoover Gerry Adams, Muir 5-11		
1939	Bob Sprinkle, Claremont	6-3	Jack Newman, LB Poly 6-2	Ray McLean, Pasadena Lowell Donnelly, San Diego Bob Allen, LB Poly 6-0			
1940	Jack Newman, LB Poly	6-2	Bob Parker, Santa Monica 6-0	Al Saplis, Inglewood Joe Frazier, Covina Carol Haygood, El Monte 5-11			
1941	Don Marvel, Inglewood Jack Kaiser, San Diego	6-2		Eugene Shear, Hunt Beach James Bennett, Sweetwater 6-0		Bob Cramer, Santa Monica Fred Foy, Redlands Don Dettmars, Chaffey 5-11	
1942	Whitney Gower, Hoover	6-4 1/2	Eugene Shear, Hunt Beach Dave Penland, Simi Valley 6-1 1/4		Charles Eberling, Harvard Willie Dancer, Covina 6-0 1/4		

1943	Whitney Gower, Hoover Charles Eberling, Harvard	6-1 3/4		Chuck Crow, Inglewood Dick Sommer, Chino		Tom Horn, Pasadena Dave Penland, Burbank	
1944	Frank Pauluzzi, Excelsior	6-1 3/4	Jack Herron, LB Wilson 6-0	Robert C. Rowland, La Puente 5-11	Bud Gill, Beverly Hills 5-10	William Ponder, Riverside Poly Don Ide, La Jolla 5-8	
1945	Franklin Nickey, Santa Ana	6-0 1/2	Don Ide, La Jolla	Ishmael Herrera, Grossmont Elmer Kinney, Santa Ana Virgil Fulton, Santa Barbara			
1946	Wilfred Schlange, Citrus	6-2 3/4	Dick Turner, Excelsior Elmer Kinney, Santa Ana		Eugene Doty, LB Poly John Waller, Mt.Carmel Daryl Butts, Excelsior Morris Ramirez, Keppel John Cardos, Cathedral		
1947	Daryl Butts, Excelsior	6-3	Morris Ramirez, Keppel	Fred Pratley, Hoover Bill Bromby, Whittier Ernie Smith, San Diego Joe Page, Grossmont			
1948	Fred Pratley, Hoover	6-4	Rudy Graham, San Diego 6-3	Dick Brombach, LB Poly Jack Razzeto, SD Hoover 6-2		Barney Dyer, LB Jordan 6-1	
1949	Norm Jiles, Santa Ana	6-4 1/2	Tom DuHamel, Inglewood	Bennett Little, Glendale Bob Macon, Cathedral		----- Fuller, Brawley Bob McGhie, San Bernardino Danny Miller, Santa Monica	
1950	Bob Macon, Cathedral Ralph Bonham, Pomona Ben Jones, Webb	6-2 1/2			Del Broomell, Tustin E.M. Oldham, Pt.Loma		
1951	Bill Gelvin, LB Poly	6-5 1/2	Ralph Bonham, Pomona 6-3 1/2	Jack Findley, Glendale Clarence James, Muir John Wilson, Pasadena			
1952	Forrest Younger, Fullerton Roy Ferguson, Excelsior Andrew Slaughter, Compton	6-1 1/2			Charles Hollingsworth, Pomona Bud Larrieu, Ventura Bill Hooks, Keppel Bernard Nelson, SD Hoover Jerry Nelson, Riverside Poly		
1953	Dick Haddon, Hoover	6-2	Andrew Slaughter, Compton Bernard Nelson, SD Hoover Tom Noonan, Coronado 6-0			Dave Bear, Santa Ana Roy Gray, Barstow Dick Skaer, South Pasadena 5-10	
1954	Charles Dumas, Centennial	6-5 1/2	Ron Snakenburg, Rosemead 6-2 1/2	Dave Baker, LB Poly Don Strickland, San Diego 6-1 1/2		Tom Turner, Antelope Valley Bob Lamkin, Bishop 5-11 1/2	
1955	Charles Dumas, Centennial	6-8 1/2	David Moore, Palm Springs 6-4 1/4	Larry Rutledge, Centennial 6-3 1/4	Charles Christy, Grossmont Jack Finch, Redlands 6-0		

1956	Bob Avant, Hart	6-4 1/2	Cornelius Dumas, Centennial 6-3	John Quinnett, San Bernardino Larry Rutledge, Centennial Norm Robinson, Colton 6-0			
1957	Bob Avant, Hart Bob Roenicke, San Jacinto Don Sampson, San Bernardino	6-6			Dave McCullough, Culver City Ray Nickleberry, Oxnard Bill Westbrook, Pomona		
1958	Ray Nickleberry, Oxnard Paul Stuber, Bellflower	6-7		Joe Faust, Culver City 6-6	Andrew Willis, San Diego 6-4	Jim Pauling, Montebello Bob Roenicke, San Jacinto 6-2	
1959	Joe Faust, Culver City Ray Nickleberry, Oxnard Paul Stuber, Bellflower	6-4 1/4			Bob Barnes, Muir Bill Lee, SD Hoover John Scott, Imperial Dennis Vollom, Anaheim James Wicks, Centennial 6-0		
1960	Guy Bauman, Notre Dame	6-5 1/4	Gary Huffman, Torrance Darryl Nelson, Kearny 6-4 1/4		John Scott, Imperial Charles DeMorst, San Bern Bill Jones, Grossmont Robert Barnes, Muir Dave Baldwin, San Marino 6-2 1/4		
1961	Lew Hoyt, San Marino	6-7 1/2	Andy Curtis, Western 6-5 1/2	Joe Lombardi, La Puente Bob Lovejoy, Leuzinger 6-4		Bob Mance, Torrance Cleveland Lidell, Centennial 6-2	
1962	Tom Quast, San Jacinto	6-7	Mike Lange, Costa Mesa 6-6	Jim Stewart, Santa Ana 6-4	Mike Parker, Notre Dame Bob Bedell, Bell Gardens Larry Mason, El Monte Cleveland Leland, Centennial 6-3		
1963	Ed Caruthers, Santa Ana Valley	6-8	Greg Heet, Lowell 6-5	Clyde Carr, Muir 6-5	Jerry Gaston, Oxnard 6-4	Larry Mason, El Monte 6-4	
1964	Rick Sloan, Anaheim	6-7	Greg Heet, Lowell 6-6	Tom Budds, Pius X 6-6	Mike Weinrich, Santa Ana 6-6	Ron Cavins, Victor Valley 6-4	
1965	Larry Fischer, Notre Dame	6-8	Larry Freeman, LB Poly 6-6	Ron Cavins, Victor Valley 6-4	William Morris, Compton 6-4	Bob Walton, Upland 6-4	
1966	William Morris, Compton	6-8	John Watson, LB Poly 6-4	Bill Hayes, Rubidoux Bill Voss, Notre Dame 6-4		Jerry Conaway, Oxnard Mike Terwilliger, Bell-Jeff 6-2	
1967	Reynaldo Brown, Compton	6-6	Ron Wicks, Centennial 6-6	Jim Arnold, San Marino 6-6	Barry Ebersol, Victor Valley 6-5	Lee Bruce, Arcadia 6-4	
1968	Reynaldo Brown, Compton	6-9 3/4	Patrick Bradford, Compton 6-7 1/2	Luther Reagan, LB Jordan 6-6 1/2	Greg Tinnin, Muir 6-4 1/2	Wayne Bradley, Muir 6-4 1/2	
1969	Reynaldo Brown, Compton	6-10	Vic Austin, LB Poly Wayne Bradley, Muir 6-6		John Liddle, Whittier 6-5	Joe Bradley, Compton 6-4	

1970	Randy Fulkerson, Santa Fe	6-6	Rory Kotinek, Millikan 6-5	Paul Menzel, San Marcos 6-5	Fred Batiste, LB Poly Terry Whitfield, Blythe Dwight Stones, Glendale 6-4		
1971	Dwight Stones, Glendale	6-9	Rory Kotinek, Millikan 6-9	Randy Fulkerson, Santa Fe 6-7	Bill Heitchev, Alhambra 6-7	Willie Gardner, Garden Grove 6-6	Arnold Johnson, Blythe 6-5
1972	Carl Miles, LB Poly	6-9	Kelly Donohue, Palos Verdes 6-8	Bill Niederer, Crespi 6-8	Darrell Robinson, LB Jordan 6-6	Rick Moore, LB Jordan Tony Madau, El Dorado 6-6	

MASTERS MEET (renamed State Qualifying meet in 1976)

1973	Tom Knarr, Notre Dame	6-6	Eugene Bernard, Chino 6-6	Darryl Robinson, LB Jordan 6-5	Vic Churchill, Alemany 6-5	Rich Parks, Crescenta Valley Steve LaRusch, Glendale Kelly Donahue, Palos Verdes 6-4	
1974	Rich Parks, Crescenta Valley	6-9 1/4	Vic Churchill, Alemany 6-8 1/4	Bruce Smith, Ventura 6-8 1/4	Steve LaRusch, Glendale 6-7	Doug Case, Laguna Beach 6-6	
1975	Ken Conner, Estancia	6-10	Kelly Johnson, Arroyo 6-6	Imre Santha, Arcadia 6-6	Jeff Lawson, El Dorado ----- Elssman, San Clemente Mitch McCall, Dominguez 6-4		
1976	Dennis Smith, Santa Monica	6-9	Mitch McCall, Dominguez 6-9	Kevin Hall, Notre Dame 6-9	Jerry Sanders, Muir 6-9	Kelly Gordien, Claremont 6-8	
1977	Dennis Smith, Santa Monica	6-10	Kelly Gordien, Claremont 6-10	Doug Nordquist, Sonora 6-8	Dave White, Marina 6-8	Gary Lawrence, Thousand Oaks 6-8	
1978	Delvon Davis, Miraleste	7-0	Brad Harris, Los Alamitos 6-8	--- Laubacher, Santa Clara 6-8	George Steelman, Yucaipa 6-8	Cary Burt, LB Wilson 6-8	
1979	Lee Balkin, Glendale	7-2	Eric Smyth, Dana Hills 6-10	George Steelman, Yucaipa 6-9	Charles Mayfield, Muir 6-9	Larry Weaver, Calexico 6-8	Randy Poltl, Alemany 6-8

4-A MEET

1973	Kelly Donahue, Palos Verdes	6-9	Darryl Robinson, LB Jordan 6-8	Veinger Fowler, Fontana 6-4	Steve LaRusch, Glendale 6-4	Rich Parks, Crescenta Valley 6-4	
1974	Steve LaRusch, Glendale	6-8 1/2	Rich Parks, Crescenta Valley 6-6	Bruce Smith, Ventura 6-6	Jack Dixon, West Covina 6-4	---- Phillips, Santa Ana Valley David Oliver, LB Jordan 6-4	
1975	Ken Conner, Estancia	6-9 1/4	Mitch McCall, Dominguez 6-7	Imre Santha, Arcadia 6-7	Kevin Cuervo, Western Mark Maxham, La Serna 6-6		John Peterson, Saddleback 6-6
1976	Mitch McCall, Dominguez	6-8	Dennis Smith, Santa Monica 6-6	Jerry Sanders, Muir 6-6	Steve Garnett, Muir 6-6	Gary Lawrence, Thousand Oaks 6-4	--- Gerlach, Thousand Oaks 6-4
1977	Dennis Smith, Santa Monica	7-0	Brad Harris, Los Alamitos 6-10	Gary Lawrence, Thousand Oaks 6-10	Dave White, Marina 6-8	Jerry Sanders, Muir 6-8	Lee Balkin, Glendale Bob Dryden, San Gorgonio 6-8
1978	Brad Harris, Los Alamitos	6-8	Scott Cox, Burbank 6-8	Cary Burt, LB Wilson 6-7	--- Anderson, Corona 6-6	--- Lee, Royal 6-6	Lee Balkin, Glendale 6-6
1979	Charles Mayfield, Muir	6-10	--- Martin, Huntington Beach 6-6	Jeff Waters, Alhambra 6-6	--- Seldschgi, Orange 6-6	--- Bivins, Burroughs Ridgecrest 6-4	Aaron Sampson, Eisenhower --- Bays, Newport Beach 6-2

3-A MEET

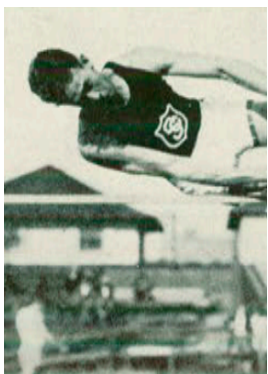
1973	Tom Knarr, Notre Dame	6-8	Gene Bernard, Chino 6-7	Randy Powell, Downey 6-6	Bruce Berg, Monte Vista 6-5	--- Gant, Kennedy, Barstow 6-4	
1974	---- Brown, San Luis Obispo	6-6	Rick Lovern, Burroughs, Ridge. 6-5	Randy Powell, Downey 6-4	Bill Hurlbut, Norwalk 6-4	Ed Barry, Inglewood 6-4	
1975	Kelly Johnson, Arroyo	6-8 1/4	Kevin Hall, Notre Dame 6-5	--- Griffith, La Quinta 6-5	--- Gonzales, El Monte --- Williams, Victor Valley --- Lees, Arroyo Grande 6-2		
1976	Kelly Gordien, Claremont	6-8	Larry Jones, Kennedy Barstow 6-8	Kevin Hall, Notre Dame 6-8	Raleigh Simmons, Barstow 6-7	Kelly Johnson, Arroyo 6-6	Dave Nelson, Azusa 6-6
1977	Larry Jones, Kennedy Barstow	6-8	Kelly Gordien, Claremont 6-8	Anthony Johnson, Ganesha 6-7	--- Reddick, Laguna Beach 6-5	--- Gersten, University 6-5	--- Mitchell, La Quinta 6-5
1978	--- Stanton, Inglewood	6-7	Eric Smyth, Dana Hills 6-6	--- Condon, Crespi 6-6	Doug Lalicker, Savanna 6-6	--- Bevins, Burroughs Ridgecrest 6-2	No sixth
1979	Lee Balkin, Glendale	7-0 1/4	Larry Weaver, Calexico 6-10	George Steelman, Yucaipa 6-8	Brian Stanton, Inglewood 6-8	--- Berger, Esperanza 6-6	--- Peavy, El Toro 6-4

2-A MEET

1973	Vic Churchill, Alemany	6-4	Steve Cosmos, El Dorado 6-4	--- Lively, Gahr Dave Nugent, Norco John Castle, El Segundo 6-2			
1974	Vic Churchill, Alemany	6-8	Doug Case, Laguna Beach 6-4	---- Currie, Trona Jim Popp, Nordhoff 6-2		John Castle, El Segundo ---- Sarihhna, Bishop Amat 6-2	
1975	Jeff Lawson, El Dorado	6-8	--- Elssman, San Clemente 6-8	--- Baskin, Esperanza --- Cox, El Toro 6-6		Todd Kirschner, El Dorado 6-6	Hawbiltzel, Duarte 6-4
1976	--- Good, Rio Mesa	6-6	--- Reddick, Laguna Beach 6-6	--- Hemphill, La Canada --- Anderson, Walnut 6-4		--- Hammond, Hemet --- McNamara, Atascadero 6-4	
1977	Dave Nordquist, Sonora	6-10	--- Good, Rio Mesa 6-8	--- Davis, Miraleste 6-8	Jim Boyd, El Dorado 6-6	--- Donaldson, Ontario 6-4	--- Vandermooren, Artesia 6-2
1978	Delvon Davis, Miraleste	6-10	George Steelman, Yucaipa 6-10	--- Laubacher, Santa Clara 6-7	--- Sears, Excelsior 6-6	--- Arnwine, Bassett 6-6	--- Spencer, Canyon 6-6
1979	Eric Smyth, Dana Hills	6-8	--- Smith, Rio Mesa 6-6	--- Cummings, Sierra Vista 6-6	--- Ross, Rio Mesa 6-6	--- Vega, Pius X 6-2	--- Franz, Covina --- Mercer, Excelsior --- Rojas, Pius X 6-0

1-A MEET

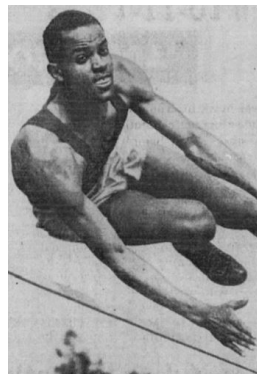
1977	Wayne Stark, Orange Lutheran	6-4	Ben Brush, Trona Frank Martinez, Bell-Jeff 6-2		Chris Sando, Notre Dame Riv 6-0	Dan White, Twentynine Palms 6-0	George Smith, Imperial 6-0
1978	Wayne Stark, Orange Lutheran	6-4	--- Stover, LA Baptist 6-0	--- Epps, Rosamond 6-0	--- Britton, Rosamond --- Bennett, Notre Dame Riv 6-0		
1979	Randy Poltl, Alemany	6-6	--- Heflinger, San Jacinto 6-4	--- Britton, San Jacinto 6-4	--- Little, Murphy 6-0	--- Howard, Desert 6-0	No sixth



HENRY COGGESHALL
 1922, 1924 CIF SS champ
 1923, 1924 State champ
 Nat'l HS high jump record



BOB VAN OSDEL
 1927 CIF co, 1928 CIF champ
 1926, 1928 co-State champ
 1932 Olympic silver medal



CORNELIUS JOHNSON
 3-time CIF champ 1931, 1932, 1933
 1932, 1933 State champ
 1936 Olympic champion
 1932 Olympics as HS junior



DELOS THURBER
 1934 CIF SS HJ champ
 1934 State HJ champ
 1936 Olympic bronze medal



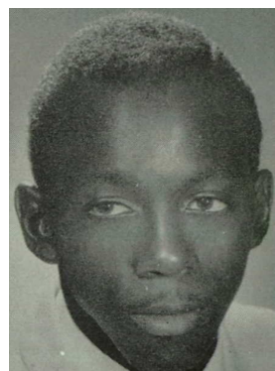
GIL LACAVA (aka Greene)
 1938 CIF SS HJ champ
 1938 State HJ champ
 1938 Nat'l HS record for 18 yrs



CHARLES DUMAS
 1955, 1955 CIF SS HJ champ
 1955 State HJ champ
 1956 Olympic gold; 2-time Olympian
 1956 first man over 7-feet



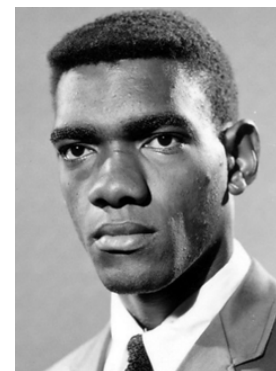
BOB AVANT
 1956 CIF champ, 1957 co-champ
 1957 State HJ champ



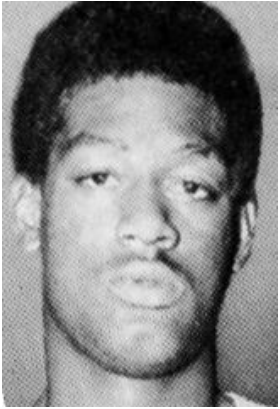
RAY NICKLEBERRY
 1958, 1959 CIF SS co-champ
 1958 State co-champ



PAUL STUBER
 1958, 1959 CIF SS co-champ
 1958 State co-champ
 1959 State HJ champ



ED CARUTHERS
 1963 CIF SS HJ champ
 1963 State HJ champ
 1964 Olympian; 1968 silver medalist



REYNALDO BROWN
1967, 1968, 1969 CIF SS champ
1967, 1968, 1969 State champ
1968 Olympian
Over 7-0 seven times in HS



DWIGHT STONES
1971 CIF SS HJ champ
1971 State HJ champ
3-time Olympian
1972, 1976 Olympic silver medal



DENNIS SMITH
1976, 1977 CIF SS Masters champ
1977 State champ
14-year NFL career with 6 Pro Bowls