

CIF SS

POLE VAULT

1913	----- Hall, Santa Paula	11-9	Luther Nichols, Pomona	Bob Munger, Santa Paula			
1914	Frank Grieve, Hollywood	11-9	George Maurer, Manual Arts	Art Wilcox, LB Poly			
1915	George Maurer, Manual Arts	11-9	Lincoln Hall, Santa Paula Bob Creswell, Pomona		Ray Childs, Manual Arts Lester Smith, Monrovia ----- Harvey, Santa Paula Fred Haney, Poly John Zuck, Santa Monica		
1916	Lincoln Hall, Santa Paula	11-9	Ray Childs, Manual Arts Ed Bradley, San Bern		M---- Brittan, Hollywood		
1917	Walter Pease, LB Poly	11-0	E---- Carey, Harvard	Norman Green, Redlands	Earl Johnson, Fullerton ----- Albright, Hollywood Royal Wilkie, Pasadena Clarence Benjamin, Poly Bob Schlaudeman, Pasadena ----- Finkham, Poly Whitney Reeves, Pasadena ----- Trotter, Santa Ana		
1918	John Leadingham, Manual Arts	11-0	Bob Schlaudeman, Pasadena	----- Emmons, Manual Arts	----- Alvarado, San Bern		
1919	John Leadingham, Manual Arts Dick Emmons, Manual Arts	11-6		Leroy Goodenough, Fillmore	----- Johnson, Santa Monica		
1920	Leroy Goodenough, Fillmore	11-9 3/4	Guy Dennis, Los Angeles	Carlos Jacobs, Chaffey	----- Renham, Pomona		
1921	Harold Shoebridge, Anaheim	11-6	Ralph Bennett, Santa Paula	Merwyn Christie, Santa Monica	Harry Smith, San Diego		
1922	Chester Bickmore, Hunt.Beach	12-0 1/2	Harry Smith, San Diego	Ross Nichols, Hunt.Beach	----- Conway, Oxnard	----- Griswell, Claremont	
1923	Harry Smith, San Diego	12-11 3/4	Chester Bickmore, Hunt.Beach	Lee Barnes, Hollywood	Ross Nichols, Hunt.Beach Jack Williams, Inglewood		
1924	Ralph Smith, San Diego	12-4	Verne McDermott, Fullerton Jack Williams, Inglewood		Lee Barnes, Hollywood Ernie Jensen, Inglewood		
1925	Jack Williams, Inglewood	12-6	----- Duncan, Inglewood	Burt DeGroot, Monrovia	Bill Hubbard, San Diego ----- Sandefur, Montebello Ed Stratman, Pomona ----- Moscko, Riverside Conrad Boye, Manual Arts		
1926	Conrad Boye, Manual Arts	12-6	Bill Hubbard, San Diego	Jerry Stewart, Los Angeles	Bruce Hamilton, Hollywood Don Maltby, LB Poly Bob Gregory, Jefferson ----- Pierce, Venice		

1927	Don Maltby, LB Poly	12-2	----- McCoy, University Pete Chlentzos, San L. Ob.		George Jefferson, Inglewood Irving Stammes, Poly Bill Miller, San Diego ----- Kingsley, San Diego ----- Stinson, Hunt.Beach		
1928	Bill Miller, San Diego	13-2 1/2	George Jefferson, Inglewood	----- Prior, Pasadena ----- Long, Pasadena Ned Johns, Huntington Park Les Anderson, Los Angeles Gus Shaver, Covina Pete Chlentzos, San Luis Ob.			
1929	Bill Miller, San Diego	13-0	Reeve Lineburner, LA 12-6	----- Casey, Inglewood Clyde Brandt, Redondo Billy Pazdra, Lincon Bill Graber, Chaffey			
1930	Dick Lindsey, Poly	12-9	Joe Ramsey, Inglewood Dave Grow, LB Poly		Al Reoin, Santa Ana ----- Shambaum, Ventura Matt Stankovich, Poly		
1931	Joe Ramsey, Inglewood	12-6	Dave Grow, LB Poly Matt Stankovich, Poly 12-3		Bill Sefton, Poly Ed Cutler, Roosevelt Jack Rand, Harvard		
1932	Bill Sefton, Poly	13-5 1/2	Tom White, LB Poly 12-9 3/4	Ralph McBride, Manual Arts 12-1 1/4	Dessery Rossiter, Manual Arts ----- Mason, Puente 11-9 3/4		
1933	Justin McCarthy, Fremont Ed Harrison, Santa Monica Jack Cage, Santa Barbara Dick Clarke, Hoover	12-7				Verne Howeth, Glendale Johnny Geldner, Chaffey 12-4	
1934	Dick Clarke, Hoover Rich Rodriguez, Poly Loring Day, Monrovia	12-6			Eldon Wonacott, Hoover ----- Grant, Pt.Loma 12-3		
1935	Eldon Wonacott, Hoover	13-0	Dick Clarke, Hoover Bob Henderson, San Diego Charles Plumley, Manual Arts 12-9			----- Bohannon, Inglewood George Hoffman, Hoover 12-6	
1936	Dave Bodkins, Inglewood Bob Henderson, San Diego	12-6		John Barnhill, San Diego 12-0	Charles Davis, LB Jordan ----- Okamura, El Monte Jim Peterson, Carpinteria Rex Badley, Glendale Bill McDonald, Fullerton Paul Semmens, LB Poly Don Upston, Inglewood ----- Wood, Compton 11-6		
1937	Guinn Smith, Glendale	12-9	Don Upston, Inglewood 12-6	Bill McDonald, Fullerton Bob DeBerard, Chaffey Don Miles, LB Wilson 12-3			

1938	O'Dell Russell, Inglewood Gale Schweikert, Leuzinger	12-9		Ed Tomaso, Glendale Roy Steed, Alhambra 12-6		Frank Ferguson, Inglewood Dell Sheeley, LB Wilson 12-0	
1939	Frank Ferguson, Inglewood Clarence "Bud" Humberger, Glendale Jim Stangeland, Hunt Beach	12-6			Glenn Shoop, LB Jordan Don Chapman, LB Wilson Gene Dick, Pomona		
1940	Paul Corwin, Burbank	13-0	Frank Ferguson, Inglewood 12-9	Glenn Shoop, LB Jordan Gene Maynard, Holtville 12-6		Calvin Gibson, San Diego Ken Beck, Leuzinger Willard Sheller, Compton 12-0	
1941	Gene Maynard, Holtville	12-9	Jack Lankas, Pasadena 12-6	Asaka Tumara, Leuzinger 12-3	Benny Eichorn, Chaffey Ray Southstone, Inglewood Al Harris, Whittier Jim Burks, Inglewood 12-0		
1942	Jack Lankas, Pasadena	12-6	Stan Peterson, Montebello Bob McArthur, Glendale 12-3		Del Smith, Glendale Hal Hakman, Inglewood 12-0		
1943	Del Smith, Glendale	12-9 1/4	Hal Hakman, Inglewood Charles Baglin, Glendale Bob Ludwig, Compton 12-6			Charles Case, LB Jordan Al Zimmerman, Compton Martin Walt, Glendale 12-3	
1944	Del Smith, Glendale	13-4	Jim Hayes, LB Poly Hal Hakman, Inglewood 13-3		Jay Saunders, LB Poly 12-6	Martin Walt, Glendale 12-3	
1945	Malcolm Marks, Bonita	12-3	Roland Schmockle, Inglewood	Elliott Popel, Hoover Bob Durham, Hoover Bob Whitaker, Whittier			
1946	Bill Mays, Oxnard	12-10 1/2	Phil Quilter, Pasadena	Rodney Henney, Pasadena	Franklin "Bud" Held, Grossmont Hal Provin, Cathedral Bob Bullock, Compton ----- Garry, Hunt Beach		
1947	Don Barnes, Fullerton John Sanders, LB Jordan Jim Burress, Keppel Jim Johnston, Compton	12-3				Dick Horn, Santa Monica Ben Babcock Compton Morris Carmichael, Anaheim	
1948	Don Barnes, Fullerton	13-0	Beryl Kempton, Excelsior 12-3	Duane Pusey, Grossmont Fred Wolcott, Beverly Hills Ken Shepherd, Corona 12-0			
1949	Duane Pusey, Grossmont	12-6	Paul Cameron, Burbank	Dave Smith, Grossmont Don Young, Burroughs		Jack Sterkel, Keppel	
1950	Dick McDonald, LB Wilson	13-7	Marvin Miller, Webb 12-9	Dave Sommers, El Monte	Floyd Hanson, Grossmont	John Brenner, Kearny ----- Fox, Santa Ana	

1951	Larry Anderson, Glendale	13-0	Orin Allen, Alhambra Bruce Billington, Inglewood Jim Carter, Compton 12-6			Ted Litwhiler, Chaffey Don Hydrick, Chula Vista	
1952	Ron Morris, Burroughs	13-3	Jim Carter, Compton 13-0 3/4	Gates Foss, Santa Barbara	Bob Foss, Santa Barbara Ted Litwhiler, Chaffey Dick "Max" Gilman, Hoover Steve Orton, Fullerton		
1953	Gates Foss, Santa Barbara	13-1	Carl Mersola, Burbank 12-10	Clyde McCowell, Riverside Poly Bob Voiles, El Monte Ron Morris, Burroughs 12-6			
1954	Bob McKay, Inglewood Joe Rose, Hoover	13-7 1/2		David James, Compton Claude Johnston, Victor Valley Jerry Hren, Inglewood Norm Burns, Chaffey 12-0			
1955	Jerry Hren, Inglewood Clyde Vernoy, Compton Tom Harrington, Hart	13-0			Gerry Peters, LB Wilson Duane Allen, Alhambra 12-9		
1956	Ralph Rocha, LB Jordan	13-5 1/2	Bill Logan, El Cajon 13-3 1/4	Don Grisch, Mira Costa 13-0	Jerry Henderson, Ventura 13-0	Dick Reese, LB Wilson John White, California 12-6	
1957	Charles Breck, Santa Barbara	13-11	Tony Alward, Chaffey 12-9	Bob Reynolds, Kearny Dave Servis, Orange 12-6	Mickey Byers, LB Wilson Dave Wunninger, Antelope Valley Dick Arevalos, Laguna Beach 12-0		
1958	John Rose, Hoover	13-9 1/2	Roger Olander, Grossmont 13-5 3/4	Mel Hein, Pasadena 13-3	Gary Price, Fullerton 13-0	Adrian Collie, Bellflower 12-9	Jerry Stitzer, Santa Monica 12-9
1959	John Rose, Hoover	13-8 1/4	Jerry Stitzer, Santa Monica 13-5 3/4	Bing Howe, Escondido 13-5			
1960	Rex Wood, El Segundo Gary Dow, Anaheim Jerry Mulkins, California Mike Flanagan, Ganesha	13-4				Brad Benton, Glendale 13-0	
1961	Steve Staus, San Gabriel	13-10 3/4	Len Cirino, Arcadia John Champion, LB Poly 13-6		Mike Lindsay, Santa Ana 13-3	Brian Smith, Edgewood Haynes Howes, Pasadena Jim Evanson, Los Altos 12-9	
1962	Eric Berge, Costa Mesa	14-5 1/4	Bob Richardson, Ganesha 14-3 1/4	Mike Lindsay, Santa Ana Nito Saucedo, Santa Barbara 13-8		Doug Swartz, Ganesha 13-4	
1963	Jeff Hendrix, Downey	14-0	Bob Seagren, Pomona 13-9	John Hergenrather, Arcadia 13-9	Marc Savage, Claremont 13-6	Tom Dullam, Buena 13-6	
1964	Paul Wilson, Warren	15-6	Tim Buchanan, Claremont 14-6	Tom Graber, Chaffey 14-0	Tom Dullam, Buena 13-6	John Trosko, Valencia 13-6	

1965	Paul Wilson, Warren	16-0	Bob Steinhoff, Warren 15-0	Paul Heglar, Muir 14-6	Jon Vaughn, Corona Les Hague, Santa Ana 14-6		
1966	Paul Heglar, Muir	15-0	Vic Dias, Rubidoux 14-0	Steve Flannery, Warren 13-6	Jeff Hergenrather, Arcadia 13-6	Dennis Walp, Loara 13-0	
1967	Bob Sprung, Pomona	14-8	Ken Montgomery, Oxnard 14-4	Vic Dias, Rubidoux 14-4	Doak Hefner, South Hills 14-0	Steve Peake, Buena 14-0	
1968	Leonard Herring, Compton	15-4	Steve Smith, South Torrance 15-0	Bob Richards, Bonita 14-8	Frank Rock, Hart 14-0	Tom Fisher, Arroyo Grande 13-6	
1969	Steve Smith, South Torrance	15-3	Daven Gray, Claremont Dennis Gingrich, Rosemead 14-4		Mike Sampson, La Habra 14-4	Neil Chapman, Warren 14-4	
1970	Dave Hamer, Santa Barbara	14-8	Mike Hill, Mayfair 14-8	Mike Tucker, Ganesha 14-4	Don Pierce, Santa Barbara 14-0	Paul Richards, Bonita 13-6	Ken Kring, Santa Maria 13-6
1971	Mike White, Dominguez	15-2	Ron Mooers, Valencia 15-2	Brad Stone, Bellflower 14-6	Tim Curran, Crespi 14-0	Steve Lierley, Dos Pueblos 14-0	Rich Yates, Inglewood 14-0
1972	Tim Curran, Crespi	15-2	Jim Collins, Valencia 14-10	Steve DeBerg, Savanna 14-6	Ray Baxter, Hart 14-0	Mike Drouin, Cabrillo 14-0	Charles Eulo, Notre Dame 14-0

MASTERS MEET (renamed State Qualifying meet in 1976)

1973	Tim Curran, Crespi	16-2	Tom Distanislao, Newport Harbor 14-6	Mike Baker, Katella 14-0	John Clemmons, Azusa 14-0	Tim Ellis, West Covina Jim Killeen, Valencia 13-6	
1974	Mike Tully, Millikan	14-6	Tim Vahlstrom, Villa Park 14-6	Jim Killeen, Valencia 14-6	Jim Knaub, Lakewood 14-0	Tom Curran, Crespi 14-0	
1975	Tom Hintnaus, Aviation	15-0	Tim Vahlstrom, Villa Park Brian Goodman, Agoura 14-8		Keith Schimmel, Villa Park 14-8	Tom Curran, Crespi 14-8	
1976	Tom Hintnaus, Aviation	15-0	Cliff Juell, Upland 15-0	Jim Bogart, Edison 15-0	John Young, Millikan Anthony Curran, Crespi 15-0		
1977	Anthony Curran, Crespi	16-1	Steve Rakhshani, Edison 15-6	Greg Ernst, El Dorado Scott Foss, Santa Ynez 14-6		Bill Thilken, Millikan 14-6	
1978	Anthony Curran, Crespi	17-1	Greg Ernst, El Dorado 16-6	Steve Tully, Millikan 15-6	Scott Foss, Santa Ynez 15-0	Bob White, La Canada 15-0	
1979	Clark Elliot, Bellflower	15-6	Tim McIntyre, Los Alamitos 15-6	Mike Worden, Warren 15-0	Steve Chronert, Notre Dame 14-6	Alan Geduld, Valencia 14-6	

4-A MEET

1973	Mike Baker, Katella	14-6	Will Bockelman, Lowell 14-2	Tom Distanislaio, Newport Harb 14-2	Robert Goto, Lowell 13-10	Marty Gresham, Marina 13-10	
1974	Mike Tully, Millikan	14-10	Tim Vahlstrom, Villa Park 14-10	Jim Knaub, Lakewood 14-2	----- Patterson, HH Wilson 14-2	Alan Simpson, Western 13-6	
1975	Tim Vahlstrom, Villa Park	15-4	Keith Schimmel, Villa Park 15-4	Jon Switzer, Burroughs 14-8	Joe Addy, LB Jordan 14-4	Tom Turner, Cypress 14-0	Kevin Anthony, Tustin 14-0
1976	Kevin Anthony, Tustin	14-6	--- Sidler, Villa Park 14-6	John Young, Millikan 14-6	Jim Bogart, Edison 14-6	Ray Casias, Royal 13-6	--- Conkle, Cypress --- Saltmarsh, Glendale --- Batdorf, Thousand Oaks --- Duncan, West Torrance 13-0
1977	Steve Rakashani, Edison	15-0	Jeff Conkle, Cypress 14-6	Steve Tully, Millikan 14-6	Bill Thilken, Millikan 14-0	Lou Hill, LB Wilson 14-0	No sixth
1978	Steve Tully, Millikan	15-0	Tim McIntyre, Los Alamitos 15-0	--- Nash, Santa Monica 14-6	Lou Hill, LB Wilson 14-6	Greg McTee, Arcadia 13-6	--- Thorpp, Marina 13-6
1979	Mike Worden, Warren	14-6	Ron Milford, Simi Valley 14-6	Tim McIntyre, Los Alamitos 14-6	Barry Leake, Corona 14-0	--- Garcia, Quartz Hill 14-0	--- Charles, South Torrance Greg McTee, Arcadia 13-6

3-A MEET

1973	John Clemmons, Azusa	13-10	Dick Parr, San Luis Obispo 13-10	Tim Ellis, West Covina 13-10	John Powers, Claremont 13-6	Randy Jochim, Downey 13-6	
1974	Tom Werner, Notre Dame	14-6	----- Clemens, Azusa 14-2	Tom Curran, Crespi 13-10	Bruce Bryan, Apple Valley 13-10	Rich Fishman, Beverly Hills 13-6	
1975	John Felando, South Torrance	15-1	Tom Curran, Crespi 14-8 3/4	Anthony Curran, Crespi 14-8 3/4	Brian Worden, Notre Dame 14-8 3/4	--- Woepse, Mater Dei 14-4	--- Barnett, Lowell 14-0
1976	Anthony Curran, Crespi	15-6	Dave Nelson, Azusa 15-2	Cliff Juell, Upland 14-0	Clark Millman, Hawthorne 14-0	--- Dalquist, Upland --- Earnest, Mountain View 13-6	
1977	Anthony Curran, Crespi	15-8 1/2	Bob Snyder, Cabrillo 14-0	Tony Brassfield, Mission Viejo 14-0	Gregg Cox, Quartz Hill 13-6	--- Plett, Troy 13-0	--- Johnson, Upland 13-0
1978	Anthony Curran, Crespi	16-5 1/2	--- Kenworth, Crespi 14-6	Dave Pinto, Keppel 14-0	Jeff Lofton, Torrance 14-0	--- Bauer, Mission Viejo 12-6	No sixth
1979	Alan Geduld, Valencia	14-0	--- Tinker, Glendale --- Stull, Troy 13-6		--- Shannon, Irvine 13-6	--- Koegel, Valencia 13-6	--- Voelzke, Schurr 13-6

2-A MEET

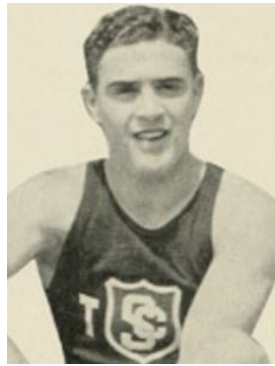
1973	Tim Curran, Crespi	15-11 3/4	Brian Goodman, Agoura 14-9	Jim Killeen, Valencia 14-2	Stan Tyler, La Canada 14-2	Jeff Ferguson, Rio Mesa 13-6	
1974	Brian Goodman, Agoura	15-4	Jim Killeen, Valencia 13-10	Tim Norton, La Canada 13-10	Jim Talley, Brawley 13-10	Mike Meledy, South Pasadena 13-6	
1975	Brian Goodman, Agoura	16-0 1/4	Tom Hintnaus, Aviation 15-3	Jim Talley, Brawley 14-8	--- Wood, Laguna Beach 14-4	--- Atkinson, San Dimas 14-2	Dave Sloggy, San Marino Harry Hindman, Gladstone --- Enberg, Brea-Olinda 13-6
1976	Tom Hintnaus, Aviation	16-4 1/2	Jamie Foss, Santa Ynez 14-0	Glen Vieira, Morena Valley 13-6	--- Parker, Brea-Olinda --- Moak, Moreno Valley --- Gladu, Bell Gardens --- Brasfield, Mission Viejo 13-0		
1977	Scott Foss, Santa Ynez	15-0	Greg Ernst, El Dorado 15-0	Bob White, La Canada 15-0	--- Nelson, Sonora 14-6	--- Parker, Brea 14-0	--- Bruner, Indio 13-6
1978	Greg Ernst, El Dorado	16-5 1/2	Bob White, La Canada 15-6	Scott Foss, Santa Ynez 15-0	Clark Elliot, Bellflower 14-0	Rocky Wilson, Indio 13-6	No sixth
1979	Clark Elliot, Bellflower	15-6	Steve Chronet, Notre Dame 14-6	Roland Flores, Nogales 14-0	Rich Lowrey, Bellflower 14-0	--- Maddox, Rio Mesa 13-0	--- Blazzie, California 13-0

1-A MEET

1977	Randy Ellis, Kern Valley	13-3	Steve McGovern, Rim of World Paul Wright, Carpinteria 12-6		Todd Meyers, Saugus 12-6	Jene Saito, Carpinteria 12-0	Russ Jandevette, Valley Christian No height
1978	--- Vandevets, Valley Christian	13-6 1/2	Steve McGovern, Rim of World 13-0	--- Palacios, Lutheran 12-6	--- Shannon, Irvine 12-6	--- Cecil, Kern Valley 12-6	--- Fairclaugh, Capo Valley 12-0
1979	--- Brock, St.Bonaventure	13-9	--- Hartman, Bishop 13-6	--- Comar, Kern Valley 12-0	--- Elgan, Carpinteria 12-0	--- Anderson, Twentynine Palms 12-0	--- Miller, Paraclete 11-6



JOHN LEADINGHAM
 1918 CIF SS PV champ
 1919 CIF SS PV co-champ
 USC fullback



LEE BARNES
 1923 CIF 3rd; 1924 4tie
 1924 CIF LJ champ
 1923 State PV 1tie; 1924 state PV 1st
 1924 Olympic champion
 World record holder



BILL MILLER
 1928, 1929 CIF SS PV champ
 1927, 1928, 1929 State champ
 1932 Olympics gold medal
 World record holder



BILL GRABER
 1929 CIF SS PV 3rd place tie
 1932, 1936 Olympian
 World record holder



BILL SEFTON
 1932 CIF SS PV champ
 1932 State PV 1st place tie
 1936 Olympian
 World record holder



DICK CLARKE
 1933, 1934 CIF co-champ
 1935 CIF SS 2nd place tie
 1934 State PV co-champ
 1935 State PV champ



GUINN SMITH
 1937 CIF SS HJ co-champ
 1937 CIF SS PV champ
 1948 Olympic gold medal



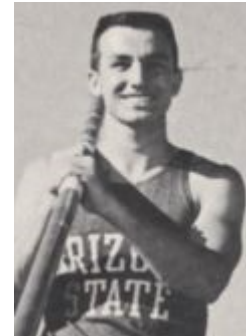
DEL SMITH
 1943, 1944 CIF SS PV champ
 1944 AAU 2nd place tie



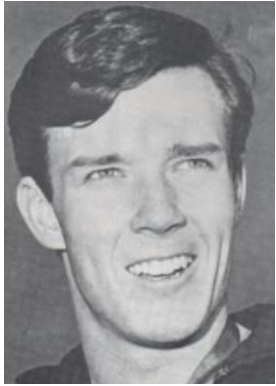
DON BARNES
 1947 CIF SS PV 1st place tie
 1948 CIF SS PV champ
 1948 State PV champ



RON MORRIS
 1952 CIF champ; 1953 3rd tie
 1952, 1953 State champ
 1960 Olympics silver medal



JOHN ROSE
 1958, 1959 CIF SS PV champ
 1958 State PV champ
 Second prep over 14-0



BOB SEAGREN
1963 CIF SS 3rd place
1968 Olympic gold; 1972 silver
Five outdoor World records
Eight indoor World records



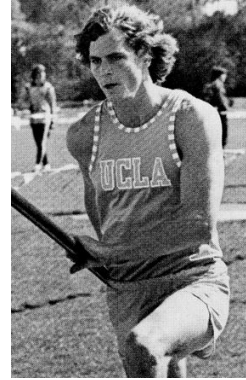
PAUL WILSON
1964, 1965 CIF SS PV champ
1964, 1965 State PV champ
World record holder



STEVE SMITH
1969 CIF SS PV champ
1968, 1969 State PV champ
1972 Olympian
Two indoor World records



TIM CURRAN
1972, 1973 CIF SS PV champ
1973 State PV champ



MIKE TULLY
1974 CIF Masters PV champ
1974 CIF 4-A PV champ
1984 Olympic silver medal



TIM HINTNAUS
1975, 1976 CIF Masters champ
1976 CIF 2-A PV champ
1976 State PV champ



ANTHONY CURRAN
1977, 1978 CIF Masters champ
1976, 1977, 1978 3-A PV champ
1977, 1978 State PV champ



BRIAN GOODMAN
1974, 1975 2-A CIF PV champ