

CIF SS

SHOT PUT

1913	----- Hall, Santa Paula	44-9	Neal Clark, Pomona	----- Richardson, Hollywood			
1914	Pete Bagnard, Pasadena	51-1	Glenn Brubaker, Hemet	----- Richardson, Hollywood			
1915	Glenn Brubaker, Hemet	48-11 1/2	----- Pettigrew, Fullerton	John McConaghay, Pasadena	Jim Blewett, Manual Arts		
1916	----- Lloyd, Santa Paula	44-5 3/4	Ken Brockman, Manual Arts	Jim Blewett, Manual Arts	George Blewett, Manual Arts		
1917	Jim Blewett, Manual Arts	48-1	Ken Brockman, Manual Arts	Roy Evans, Chaffey	----- Martin, Riverside		
1918	John Sentous, Hollywood	44-0 1/2	Archie Nesbit, Pomona 44-0	Thatcher Taylor, Los Angeles	Clovis Fouche, Pasadena		
1919	John Boyle, Manual Arts	45-6	Ernest Hartman, Poly	Richard Sampson, Los Angeles			
1920	Clarence Houser, Oxnard	49-2 1/4	Larry Richards, Los Angeles	Norm Anderson, Los Angeles	Jim Lawson, LB Poly		
1921	Clarence Houser, Oxnard	53-2 1/4	Craig Mason, Hollywood	Ed Lynch, Manual Arts	Clifford Martin, Riv Poly		
1922	Clarence Houser, Oxnard	54-2	Ed Lynch, Manual Arts	Fay Thomas, Canoga Park	Clifford Martin, Riv Poly	Joe Aleski, Oxnard	
1923	Jim Coyne, Hollywood	43-0 1/4	Joe Aleksi, Oxnard	Al Kwasigroh, Los Angeles	George Dyer, Lincoln	Dick Chattin, Los Angeles	
1924	Alma Van Fleet, Chaffey	47-6	Mark Lehmer, Lincoln	Daniel Fisher, Redondo	John Hill, Los Angeles	Abe Dubin, Lincoln	
1925	Bob Patton, Riverside Poly	46-4 1/4	Melvin Reed, Los Angeles	Paul Ennisiman, Manual Arts	Earl Zintgraff, Poly	Joe Hillman, Manual Arts	
1926	Maury Lauterman, Poly	48-11 3/4	Ed Moeller, San Diego	Harry Edelson, Jefferson	Bob Patton, Riverside Poly	Clarence Schleimer, Pasadena	
1927	Harold Falter, Glendale	50-0 1/2	Fred Steiner, Chaffey 49-8 1/4	Saul Gorss, Roosevelt	Al Lefebvre, Manual Arts	----- Newman, Fremont	
1928	Ray Morgan, Poly	49-5 1/4	Garrett Arbelbide, Hunt Park 48-7 1/2	Nelson Gray, Chaffey 48-4 3/4	Marvin Turner, Manual Arts 48-3 1/2	Saul Gorss, Roosevelt 47-10	
1929	Nelson Gray, Chaffey	52-10 1/4	Gardner Frye, Muir 50-3 3/4	John Lyman, Santa Monica 49-10	Ev Campbell, Los Angeles 48-10 1/2	Aubrey Brooks, Belmont 48-7 1/2	
1930	John Lyman, Santa Monica	54-7	Don Carter, Franklin 52-6 1/2	Charlie Hull, Inglewood 52-2	Len Morgan, Pasadena 51-5	Heuston Harper, Gardena 50-4	
1931	Don Carter, Franklin	53-2 3/4	Clarke Smith, Paso Robles 51-6 1/4	Dave Meek, Chaffey 49-8 3/4	Dick Haman, Manual Arts 49-5 1/2	Clarence Cooper, Belmont 48-8 1/4	
1932	Joe Huston, Hoover	52-6	Theron Keller, Inglewood 51-0	Bob Pyle, Pasadena 50-8 1/2	Frank Pastore, Lincoln 50-3	Hugo Slocombe, LB Wilson 49-3 1/2	
1933	Jim Donaldson, Hollywood	53-4 1/2	Woody Strode, Jefferson 50-8 1/4	George Boone, Compton 50-4 1/4	Ray Young, Riis 50-2 3/4	George Bergman, Inglewood 49-9 1/4	

1934	Ray Young, Riis	53-8	Johnny Meek, Chaffey 51-8	Bill Troxel, Inglewood 51-7	Loren Miller, Manual Arts 51-4 1/2	Jim Donaldson, Hollywood 51-4	
1935	John Raitt, Fullerton	55-10 1/4	Ray Young, Riis 55-1 3/4	Walt Neilsen, Redondo 52-8 3/4	Jim Colee, Inglewood 52-7 1/2	John Flinn, Beverly Hills 52-5	
1936	Nella del Porto, Santa Maria	52-11 3/4	Chuck Crowell, Excelsior 51-7	Norm Standlee, LB Wilson 50-9	Ben Sohn, San Diego	Quentin Klenk, LB Poly 49-4 1/2	
1937	Ed Becker, San Diego	53-1	Alan Grey, Hoover 52-8 1/4	Norm Standlee, LB Wilson 50-4	Charles Norman, Alhambra	Frank Bruno, Inglewood	
1938	Ed Becker, San Diego	54-0 1/2	Syd Barton, Hoover 50-5 3/4	Phil Krutzch, SD Hoover 48-6	----- Smith, Coachella Valley 48-4 1/2	Ray Tribe, Inglewood 47-9 1/2	
1939	Frank Minini, Santa Maria	52-11	Ed Hayes, Burbank 52-2 3/4	Bob Ward, Garden Grove 49-7 3/4	Stan Harlan, Holtville 49-6 3/4	Bill Hanson, Alhambra 48-11 3/4	
1940	Frank Minini, Santa Maria	54-10 1/4	Bill Hull, Santa Ana 52-6 3/4	Steele Robson, LB Jordan 49-8 1/4	Jack Clifford, Pomona 49-8	Bob Stevens, Santa Barbara 49-5	
1941	John Irwin, Pasadena	50-11 1/2	Jack Clifford, Pomona 50-4	Jim Christopher, Santa Barb 50-0 3/4	Ted Jacobs, SD Hoover 49-11 1/2	Jerry Shipkey, Anaheim 49-4 1/4	
1942	Jerry Shipkey, Anaheim	56-1 1/2	Ralph Davis, Bonita 54-2 3/4	Ken Mitchell, Excelsior 51-3	Jim Christopher, Santa Barb 50-4 1/2	Gonzalo Valles, San Bern 48-11 3/4	
1943	Jerry Shipkey, Anaheim	53-5	Ralph Davis, Bonita	George Pastre, Pasadena	Tom Presley, Monrovia	Al Sawaya, San Diego	
1944	Don Bewsey, El Monte	52-6 1/2	Sam Chianis, LB Poly 48-9	Eric Blore, Beverly Hills 48-6 1/2	Gil Martin, Grossmont 47-7 3/4	Bob Hawks, Covina 47-0 1/4	
1945	Louis Blanc, El Monte	49-2 1/4	Leo Schlick, Santa Barbara	Gil Martin, Grossmont	Russell, Santa Barbara	Joe Acevedo, San Diego	
1946	John Helwig, Mt. Carmel	59-0	Earl Smith, Bonita	Bob Paysinger, Burbank	George Pinnell, La Jolla	Keith Drum, Covina	
1947	Walt Ashcraft, LB Poly	55-6 1/2	John Morton, Compton	Joe Acevedo, San Diego	----- Beardsley, Harvard	Tom Machtolf, Cathedral	
1948	Bob van Doren, San Diego	55-0 1/4	Ken Peach, El Segundo 52-9	Dexter Ragatz, South Pasadena 51-11 1/2	John Davis, San Diego 50-10 1/4	Bobo Lewis, Santa Monica 50-4 1/2	
1949	Parry O'Brien, Santa Monica	57-9 1/2	Hal Norris, Grossmont	John Davis, San Diego	Jim Vick, Chaffey	Eugene Rogers, Downey	
1950	Hal Norris, Grossmont	58-2 1/2	Charlie Powell, San Diego	Kenny White, Chula Vista	Rudy Valadez, Chaffey	Dave Patton, Harvard	
1951	Clyde Wetter, Grossmont	58-4 1/4	Charlie Powell, San Diego 57-9 1/4	Dave Patton, Harvard	Phil Brabyn, South Pasadena	Larry Ross, Monrovia	
1952	Don Vick, Chaffey	58-6	Clark Burchfiel, LB Wilson	Pete Bender, Harvard	Ted Polich, South Pasadena	Fred White, Chula Vista	
1953	Don Vick, Chaffey	61-0 1/4	Dick Bronson, Grossmont 56-3 3/4	Fred White, Chula Vista 58-4 3/4	Fabian Abram, Redondo 53-6	David Bessie, Santa Monica 53-5 1/4	
1954	Dick Bronson, Grossmont	59-8 3/4	Dave Goodenough, Fillmore 55-0	Duane Milleman, Fontana 54-4 1/2	Neil Schleffer, Santa Monica 53-9 1/2	Gary Yurosek, Hart 53-3 3/4	
1955	Duncan Ward, Santa Monica	59-3 3/4	Homer Robertson, Pacific 57-11 1/2	Duane Milleman, Fontana 57-2	Frank Olson, El Segundo 55-10 1/2	Charles Martin, Riverside Poly 55-9	

1956	Homer Robertson, Pacific	61-10 1/4	Jack Metcalf, Inglewood 57-5	Dick Foushee, Hoover 56-5 1/2	Dick Verdon, SD Hoover 56-5 1/4	Mike McKeever, Mt.Carmel 55-10 1/2	
1957	Clark Branson, Pasadena	62-5 1/4	Mike McKeever, Mt.Carmel 62-2 3/4	Jim Wade, Grossmont 61-5 3/4	Jim Smith, LB Poly 60-0	Marlin McKeever, Mt.Carmel 59-7	
1958	Jim Smith, LB Poly	60-10 1/2	Jack Slocombe, Millikan 58-11	John Chamberlain, Riverside Poly 58-3 1/2	John Nicholson, Hawthorne 58-1	Vern Slater, Colton 54-6 1/2	
1959	Dick Merritt, LB Jordan	57-4	Dewey Taylor, Grossmont 56-3	John Glenn Pomona 55-8	Jim Nelson, Muir 55-7	Charles Buehler, Whittier 55-6	
1960	Gene Nettleton, Atascadero	60-8 1/4	Pat Kelso, Bellflower 59-9 3/4	Dennis Twitchell, Santa Maria 58-9 1/2	Steve Fite, San Jacinto 58-4 1/4	Les Cites, El Capitan 58-2 1/4	
1961	Bill Pace, El Rancho	65-2 3/4	Mike Bianco, El Segundo 63-11 1/2	Larry Richards, Riverside Poly 60-9 3/4	Jim Green, Monrovia 59-11	Dick Hansen, Mira Costa 58-0 3/4	
1962	Roger Foster, California	60-6 1/2	Jeff Smith, LB Poly 59-10	Dan Dye, Hawthorne 58-11	Steve Ledbetter, Brea-Olinda 58-0	Bernard Zwick, Rosemead 57-11 3/4	
1963	Roy Thurman, Western	59-6 1/2	Karl Henke, Ventura 58-11 1/2	Dennis Crane, Colton 58-2	Tim Kearin, Muir 57-10 1/4	Doug Bagby, LB Poly 57-3 3/4	
1964	Tim Kearin, Muir	61-10	Ray Alger, Whittier 59-5	Ron Fricia, San Marcos 59-1 1/4	Mike Pringle, Dominguez 58-9 3/4	Ralph Allen, Muir 57-9 3/4	
1965	John Hubbell, LB Poly	63-0 1/2	Ray Alger, Whittier 61-9 1/4	Brodie Dunn, Mayfair 61-1 1/4	Dave Murphy, Sunny Hills 59-11	George Buehler, Whittier 59-1 3/4	
1966	John Hubbell, LB Poly	67-9 3/4	Dave Murphy, Sunny Hills 64-11 1/4	Mark Ostoich, San Bernardino 61-6 3/4	Tom Colich, Inglewood 60-4 1/4	Ed Howard, Muir 59-7 1/2	
1967	John Buehler, Whittier	65-9 3/4	Mark Ostoich, San Bernardino 63-5 3/4	Ed Howard, Muir 62-2 3/4	Steve Preston, Eisenhower 62-0 3/4	Ernie Cathcart, Fontana 61-6 1/2	
1968	Sam Cunningham, Santa Barb	59-4 1/2	Gary Brown, Muir 59-0 1/2	Randy Wilkinson, Pacific 59-0	John Papadakis, Rolling Hills 58-4 1/2	Ernie Cathcart, Fontana 58-2 1/2	
1969	Sam Cunningham, Santa Barb	64-9	Kerry Eskelli, Serra 64-8 3/4	Steve Lauriano, Lakewood 60-5 1/4	Dave Schiller, Millikan 58-5 1/2	Pat Murray, Lowell 57-6 3/4	
1970	Randy Withrow, Pasadena	63-11	Roger Freberg, San Marino 63-0 1/2	Dave Schiller, Millikan 62-1 1/2	Kent Pagel, Fullerton 61-3 1/4	Gene Clark, Riverside Poly 61-1 3/4	Don Turri, North Torrance 56-7 1/4
1971	Terry Albritton, Newport Harbor	64-4	Mark Stevens, Newport Harbor 62-5 1/4	Randy Cross, Crespi 61-11 1/2	Larry David, Camarillo 59-5 3/4	Carlos McCall, Centennial 59-5	Mike Giroux, Mira Costa 58-3 1/2
1972	Terry Albritton, Newport Harbor	67-4	Randy Cross, Crespi 66-7 1/4	Jim Neidhart, Katella 60-10 3/4	Tony Ciarelli, Hunt Beach 58-6	Bob Johnson, Mayfair 57-11 3/4	Todd Anderson, Buena 57-10 1/4

MASTERS MEET (renamed State Qualifying meet in 1976)

1973	Jim Neidhart, Newport Harbor	67-3 3/4	Dave Doupe, Inglewood 66-9 1/4	Dave Kurrasch, Santa Ana 61-1	Marcus Gordien, Claremont 58-8 1/4	Jean Beaudry, Crespi 57-2 3/4	Ron Engle, Hart 57-0 3/4
1974	Dave Kurrasch, Santa Ana	63-11 1/2	Rich Torbert, Lowell 60-10	Dave Laut, Santa Clara 59-8 1/4	Dan Lindquister, Simi 57-4	Mark Madison, LB Poly 56-7 1/2	
1975	Dave Kurrasch, Newp Harbor	65-10 1/2	Dave Laut, Santa Clara 65-2	Brad Slinkard, St.Paul 64-10 1/4	Mark Madison, LB Poly 63-2 1/2	John McKenzie, Hart 60-11 1/2	
1976	John McKenzie, Hart	65-4	Paul Johnson, Brea-Olinda 60-0 1/4	Joe Staub, Cantwell 59-6 1/2	Craig Silverman, La Mirada 59-4 1/2	Rich Johnson, Mayfair 59-3 1/4	
1977	Craig Polley, Sunny Hills	63-6 1/2	Steve DeForrest, Katella 60-4 1/2	Martin Fuentes, Servite 58-7	Ricky Fairman, Pomona 58-6 1/2	Steve Futujma, Hueneme 58-1 1/2	
1978	Brian Faul, West Covina	62-2	Vincent Brown, Mater Dei 61-3	John Brenner, Fullerton 60-11	Hank Kraychir, San Jacinto 59-0 1/4	John Newman, Victor Valley 57-6 3/4	
1979	John Brenner, Fullerton	62-6 1/2	Jim Spillers, Rowland 60-0 1/2	Hank Kraychir, San Jacinto 59-4 1/2	Scott Garnett, Muir 59-1 3/4	Ken DeShano, Canyon Anaheim 58-6	Chris Dressel, El Dorado 56-8 3/4

4-A MEET

1973	Dave Doupe, Inglewood	67-8 1/4	Jim Neidhart, Newport Harbor 67-5 3/4	Dave Kurrasch, Santa Ana 58-7	Brian Dyke, Bolsa Grande 56-4 3/4	John Owens, Inglewood 56-2 1/4	
1974	Dave Kurrasch, Santa Ana	64-1 3/4	Rich Torbert, Lowell 58-9 1/2	Jim Odoms, Dos Pueblos 57-8 3/4	Mark Madison, LB Poly 57-2 1/2	Dan Lindquister, Simi 56-11 1/4	
1975	Dave Kurrasch, Newport Harbor	68-5	John McKenzie, Hart 61-5	Mark Madison, LB Poly 60-3	Jim Odoms, Dos Pueblos 59-7	Dave Fuller, Hart 58-4 1/2	Jeff Hickey, Santa Monica 57-4 1/2
1976	John McKenzie, Hart	67-9	Jim Hunter, Santa Barbara 60-10 1/2	Rod Miller, LB Poly 58-6	Chuck DeSadier, Eisenhower 58-6	Steve Sackinger, HH Wilson 58-1 3/4	--- Pollock, Glendale 57-1 1/4
1977	Steve DeForrest, Katella	59-4 1/2	Greg McSeveney, Gahr 57-2 3/4	Steve Futujma, Hueneme 56-10	John Mirch, Crescenta Valley 56-8 1/2	Flemmer Clark, LB Poly 55-8	Doug McKenzie, San Marcos 55-6 1/2
1978	Scott Garnett, Muir	58-0 1/2	Tom Hazelton, Downey 57-5	--- Williams, LB Wilson 54-6 1/4	--- Phillips, Millikan 53-9 1/2	--- Gray, Palm Springs 53-7	--- Cowan, Monrovia 52-5 1/2
1979	Jim Spillers, Rowland	61-0 1/2	Scott Garnett, Muir 59-5 1/4	Ken DeShano, Canyon Anaheim 58-8 1/2	Wimpy Robertson, West Covina 58-2 1/2	B--- Holden, Hart 56-0 1/2	Fred Cornwell, Canyon Saugus 53-9 1/4

3-A MEET

1973	Marcus Gordien, Claremont	58-7 3/4	Ron Engle, Hart 56-11 3/4	Dan Lindquister, Simi Valley 54-5 1/2	Ray Chambers, Arroyo 54-4 3/4	----- Alvarez, Bosco Tech 54-4	
1974	Greg Gerlach, Keppel	55-9 1/2	Willie Beamon, San Bern 54-4 1/4	Dwight Wood, Sierra 54-3 1/2	Mike French, Warren 54-0	-----Sunday, Rowland 53-7	
1975	Brad Slinkard, St.Paul	62-4 3/4	Manu Tuiasosopo, St.Anthony 57-10 1/4	Greg Rice, Hawthorne 57-9	Hank Zibell, Pomona 57-8	Steve Streny, Lowell 57-6	Paul Palkovic, Crespi 57-3 1/4
1976	Craig Silverman, La Mirada	58-11 3/4	Hank Zibell, Pomona 58-9 1/2	Paul Palkovic, Crespi 57-7 1/4	Keith Van Horne, Fullerton 57-1	--- Watson, Santa Ana Valley 55-9 1/4	Melvin Sanders, Loyola 55-4 1/4
1977	Craig Polley, Sunny Hills	60-7 1/2	Martin Fuentes, Servite 59-6 1/4	Ricky Fairman, Pomona 57-9	Brian Faul, West Covina 57-0 1/2	Vincent Brown, Mater Dei 56-3	John Harper, San Clemente 55-10 1/2
1978	Brian Faul, West Covina	62-3 3/4	Vincent Brown, Mater Dei 56-4 3/4	Pat McCool, Antelope Valley 54-6 1/2	Curt Orr, Canyon Saugus 53-9 1/4	Dave Lira, St.John Bosco 53-6	--- Walker, Lompoc 53-5 1/2
1979	John Brenner, Fullerton	61-0	Ken Mills, University 61-0	Chris Dressel, El Dorado 58-3 1/2	--- Orloff, Barstow 53-9	--- Svarchek, San Luis Obispo 53-0	--- Pena, Brawley 52-4 1/2

2-A MEET

1973	Jean Beaudry, Crespi	55-7	Chester Drew, Brawley 55-1 3/4	Judd Binley, Laguna Beach 54-2 3/4	Paul Freberg, San Marino 53-7	Mike Fasani, Crespi 53-1	
1974	Dave Laut, Santa Clara	59-3 1/2	Dennis Riggins, El Segundo 54-2 1/4	Mike Ebman, Brawley 53-10 3/4	Brad Slinkard, St.Paul 53-9 3/4	Gary Quantock, Rio Mesa 53-1 1/2	NOTE: Alvarez, Bosco Tech, 2nd, 56-9 3/4, but DSQ
1975	Dave Laut, Santa Clara	62-3	Mark Velasquez, Gladstone 58-2 1/4	Rich Johnson, Mayfair 58-0	Gary Quantock, Rio Mesa 55-11 3/4	----- Peyton, Beaumont 54-0 1/4	Lance Al-Bayati, Mission Viejo 52-9
1976	Paul Johnson, Brea-Olinda	60-2 1/4	Joe Staub, Cantwell 58-9	Rich Johnson, Mayfair 56-9 1/2	John Harper, San Clemente 56-2	--- Stack El Dorado 54-8 1/4	--- Platisa, Gladstone 54-6 1/2
1977	Joe Staub, Cantwell	59-4 1/2	Don Brandes, Canyon 57-1 1/4	--- Malone, Moreno Valley 55-11 1/4	Brian Jackson, Walnut 54-8	Joe Lipp, Neff 52-4	--- Rhoden, Norte Vista 52-2
1978	Jim Spillers, Rowland	59-7 1/2	John Newman, Victor Valley 58-10 3/4	John Brenner, Fullerton 54-11	--- Hicks, Nogales 54-9 1/2	--- Romero, Indio 54-1 1/2	--- Moody, St.Bernard 53-10 1/2
1979	Dave Lira, St.John Bosco	58-0 1/4	Gary Hicks, Nogales 57-9	--- Cunz, San Marino 57-3 3/4	Ted Polich, San Marino 54-8 1/2	---- Ili, Nogales 54-7 1/2	---- Baron, Royal Oak 53-7 3/4

1-A MEET

1977	Chris Brock, St.Bonaventure	52-0 3/4	Bob Davis, Brethren 51-2 1/2	John Weatherspoon, Twentynine Palms 49-6	Tim Telliard, Notre Dame Riv 48-7 1/2	--- Howze, Brethren 48-1	Brian Wilkie, Needles 47-7 1/4
1978	Hank Kraychir, San Jacinto	57-7 1/2	Mark Marnati, Bloomington 52-4 1/4	Mike Wayne, Kern Valley 52-1 1/4	Jeff Finger, San Jacinto 51-1 3/4	--- Orloff, Barstow 49-11	--- Telliard, Notre Dame Riv 49-6
1979	Hank Kraychir, San Jacinto	58-10 3/4	--- Secrease, Alemany 55-0	Jeff Finger, San Jacinto 53-5 1/2	---- Telliard, Notre Dame Riv. 52-9 3/4	--- Greenwood, Verbum Dei 51-6 1/2	--- Kuenn, LA Baptist 50-9 1/4



CLARENCE 'BUD' HOUSER

1920, 1921, 1922 CIF SS champ
1920, 1921, 1922 State SP champ
1924 Olympic SP gold medal
1924, 1928 Olympic DT gold
Discus world record holder



NELSON GRAY

1929 CIF SS SP champ
1932 Olympian



ED BECKER

1937, 1938 CIF SS SP champ



FRANK MININI

1939, 1940 CIF SS champ
1939 State SP champ
NFL halfback



JERRY SHIPKEY

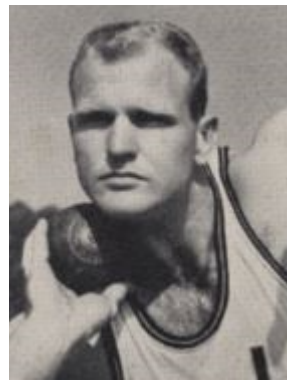
1942, 1943 CIF SS SP champ
NFL 3-time Pro Bowl linebacker



JOHN HELWIG
1946 CIF SS SP champ
1946 State SP champ
1946 Nat'l HS SP record



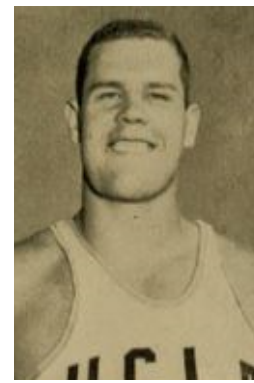
PARRY O'BRIEN
1949 CIF SP champ
1952, 1956 Olympic SP gold medal
1960 Olympic SP silver medal
World outdoor record 16 times
First man over 60-0



DON VICK
1952, 1953 CIF SS SP champ
1953 State SP champ
Nat'l HS SP record



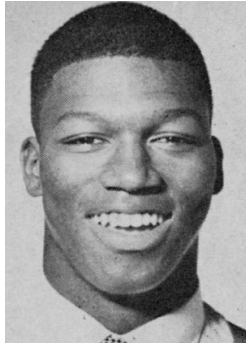
HOMER ROBERTSON
1956 CIF SS SP champ
1956 State SP champ
Nat'l HS SP record



CLARK BRANSON
1957 CIF SS SP champ
1957 State SP champ
Nat'l HS SP record



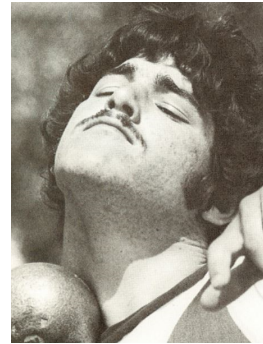
JOHN HUBBELL
1965, 1966 CIF SS SP champ
1966 State SP champ
1969 Pac-8 SP champ



SAM CUNNINGHAM
1968, 1969 CIF SS SP champ
1969 State SP champ
College FB Hall of Fame



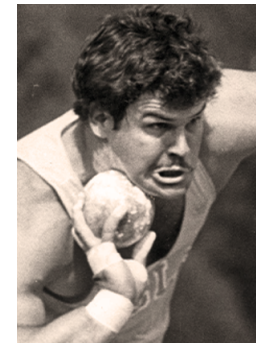
TERRY ALBRITTON
1971, 1972 CIF SS champ
1977 NCAA SP champ
World record holder



DAVE KURRASCH
1974, 1975 CIF Masters champ
1974, 1974 4-A SP champ
1974, 1975 State champ



DAVE LAUT
1974, 1975 CIF 2-A SP champ
1984 Olympic bronze medal
World record holder



JOHN BRENNER
1979 CIF Master SP champ
1979 CIF 3-A SP champ
World record holder