

COAST LEAGUE

100

1924	D---- Garner, LB Poly	10.8	Bill Powell, San Diego	Rocky Kemp, San Diego	John Greer, Pasadena		
1925	Fred Doty, LB Poly	10.2	Bill Powell, San Diego	Harry Holloway, San Diego	Howard Paul, Santa Ana		
1926	Russ Slocum, Glendale	10.2	Mel Caines, Pasadena	Frank Wykoff, Glendale	Dave Zaun, Glendale		
1927	Frank Wykoff, Glendale	9.9	Russ Slocum, Glendale 10.0	Harvey Bear, Santa Ana	----- Griffith, San Diego		
1928	Frank Wykoff, Glendale	10.0	Lloyd Goodman, LB Poly	Dave Zaun, Glendale	Ernie Velarde, Santa Ana		
1929	Jimmy Willson, San Diego	10.2	Fernando Ortiz, San Diego	John Stephens, Pasadena	----- Pyle, Pasadena		
1930	Fernando Ortiz, San Diego	10.1	Bud Pagliuso, Glendale	Sammy Sands, Pasadena	Norm "Red" Franklin, LB Poly		
1931	Al Fitch, Pasadena	9.6	Bud Pagliuso, Glendale	Fred Montpellier, San Diego	Plato Smart, Compton		
1932	Don Colvin, LB Poly	9.8	Joe Nuccio, Alhambra Bill Berg, Glendale		Richard Juratsch, LB Poly		
1933	Bob Stombaugh, Alhambra	10.2	Bruce Swisshelm, Santa Ana	Steve Taggart, Glendale	----- Wildman, LB Poly		
1934	Steve Taggart, Glendale	10.2	Rick Thompson, Alhambra	John Callier, Pasadena	Ed Lewis, San Diego	Roger Clemens, LB Poly	
1935	Tommy Nelson, Pasadena	10.2	Ed Lewis, San Diego	Payton Jordan, Pasadena	Roger Clemens, LB Poly	Merle Chase, Glendale	
1936	Roger Clemmens, LB Poly	10.2	Henry Manley, San Diego	----- Tomkins, Alhambra	----- Adams, Santa Ana	----- Reid, Alhambra	
1937	Burdette Gandy, LB Wilson	9.9	Jack Hodges, Alhambra	----- Reid, Alhambra	----- Adams, Santa Ana	John Finan, SD Hoover	
1938	Bill Van Leuven, LB Wilson Clyde Yakel, SD Hoover	10.0		Leonard Black, San Diego	Bob Wilson, LB Poly	Bob Estavillo, San Diego	
1939	Tom Davies, LB Poly	10.1	Bob Estavillo, San Diego	Louie Barrera, San Diego	Bob Barton, Alhambra		
1940	Bob Estavillo, San Diego	10.1	Bill Lang, LB Poly	Louie Barrera, San Diego	Larry Smith, LB Poly		
1941	Glenn Willis, San Diego	9.8	Donald Smalley, San Diego	Louis Barrera, San Diego	Larry Smith, LB Poly		
1942	NO MEET						
1943	NO MEET						
1944	NO MEET						

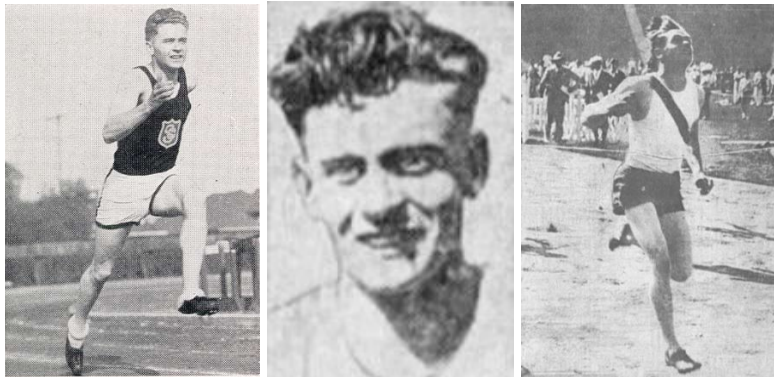
LONG BEACH-COMPTON GROUP

1945	Phil Chauvin, LB Poly	10.5	Ray Vaughn, LB Wilson	Charles Roudebush, Compton	----- Chitakis, Compton		
1946	Roy McCoy, LB Wilson	10.1	Bob Heusser, LB Poly	Ted Reprecht, LB Wilson	Don Davis, Compton		

COAST LEAGUE resumed

1947	Bill Fell, Compton	10.1	Don Davis, Compton	Bill Kirby, SD Hoover	Tommy Lowerison, San Diego	Charlie Davis, San Diego	
1948	Bill Fell, Compton	9.7	Hal Miller, San Diego	Charlie Davis, San Diego	Joe Law, SD Hoover	Don Hill, Compton	
1949	Charlie Davis, San Diego	10.3	Hal Espy, San Diego	Jim Weed, Grossmont	Bob Carson, Compton	Darnes Johnson, San Diego	
1950	Henry Warner, Muir	10.1	Hal Espy, San Diego	Darnes Johnson, San Diego	Bob Carson, Compton	Frank Johnson, San Diego	
1951	Louis Owens, LB Poly	10.0	Gary Rohlf, LB Wilson	Rollin Garrison, Compton			
1952	Larry Newquist, LB Wilson	10.2	Rollin Garrison, Compton	Dick Lonsdale, LB Wilson	Bob Luke, Compton	Don Malloy, LB Wilson	
1953	Fred Armstrong, Compton	10.1	Ricky Maris, LB Jordan	Johnny Morris, LB Poly	Ed Kullos, Downey	----- Carter, Compton	
1954	David James, Compton	10.1	Floyd Anderson, Compton	Ed Lauer, LB Jordan	Ricky Maris, LB Jordan	----- Fisher, Compton	

1955	John Magnuson, Compton	10.2	George Nichols, Excelsior	Fred Sharpe, LB Wilson	Willie Williams, LB Poly	Gary Bradley, LB Wilson	
1956	Fred Sharpe, LB Wilson	10.0	Don Warner, Paramount	Burt Miller, Lynwood	Carl Ehmann, LB Wilson	Ken Jones, LB Poly	
1957	Harrison Walker, LB Poly	9.9	Don Warner, Paramount	Brent McDowell, Downey	George Whitehead, Paramount Charley Miller, LB Poly		
1958	Willie Williams, Compton	10.0	Dexter Griffin, Centennial	Bennie Sankey, Centennial	Jim Jones, Compton	----- DeLong, Lynwood	
1959	----- Harris, Compton	10.1	Woody Prude, Compton	J---- Hill, Centennial	Don Doepke, Warren	Ken Nash, Paramount	
1960	Donald Meadows, Centennial	10.0	John Walker, Compton	John Moore, Compton	Cleve Tyler, Centennial	Leon Vaughn, Compton	
1961	Cleve Tyler, Centennial	9.9	Donald Meadows, Centennial	Donald Owens, Centennial	Himmer Henry, Compton	Leon Vaughn, Compton	
1962	Chuck Kanoy, Dominguez	9.9	Gonzelo Cureton, Centennial	----- Henderson, Centennial	John McGowan, Centennial	----- Long, Compton	
1963	Trippe Elam, Centennial	9.7	Ronald Armstrong, Compton	James Virden, Centennial	----- Sterling, Compton		
1964	Ruben Rojas, Paramount	10.1	Lewis Scott, Centennial	Melvin Virden, Centennial			
1965	Ruben Rojas, Paramount	9.7	Melvin Virden, Centennial	Dwight Evans, Compton	----- Davis, Compton	Carl Moore, Compton	
1966	Lowry Cuthbert, Dominguez	9.8	Dwight Evans, Compton	----- Lewis, Dominguez			
1967	Nathan Spann, Centennial	9.7	Lowry Cuthbert, Dominguez 9.8	Preston Dixon, Centennial 9.9			
1968	Edesel Garrison, Centennial	9.6	Thomas White, Centennial	Jerry Wheaton, Compton			
1969	Charles Debato, Centennial	9.7	Eric Kaufman, Centennial 9.7	Paul Wilson, Dominguez 9.7			
1970	Warner Alexander, Compton	9.9	Jerry James, Centennial 9.9	Duane Hamilton, Compton 10.0			
1971	Alfred Jackson, Centennial	10.0	Larry Kirk, Dominguez 10.0	Gordon Peppers, Compton 10.1			
1972	Greg Thornsburg, Dominguez	10.0	Phil Moure, Montebello 10.0	Edwin Figueroa, Montebello 10.2			



Frank Wykoff from Glendale High was a three-time Olympian and world record holder in the 100 yard dash. Wykoff made his first Olympic team as a high schooler in 1928. Part of USA gold medal 4x100 meter relay teams at 1928, 1932 and 1932 Olympics. Took 8 firsts in Coast League meets winning 100, 220, long jump and part of 4x220 relay teams in 1927 and 1928. Also won State 100, 220 and long jump in 1927. Attended Glendale College in 1929 and then competed at USC.

FRANK WYKOFF BEST MARKS & MEETS

1925 Glendale HS	100	10.2	<u>High School</u>
1926 Glendale HS	100	10.0	1926 Coast Lea 100 3rd ---
1927 Glendale HS	100	9.7	1926 CIF 100 4th ---
1928 Glendale HS	100	9.5	1926 State 100 3rd 10.0
1929 Glendale JC	100	9.6	1926 SPA AAU HS 100 2nd ---
1930 USC	100	9.4	1927 Coast Lea 100 1st 9.9
1931 USC	100	9.5	1927 CIF prelims 100 1st 9.8
1932 USC	100	9.7	1927 CIF semi 1st 10.0
1933 unattached	100	9.5	1927 CIF 100 1st 9.8
1935 unattached	100	9.5	1927 State 100 1st 9.8
1932 USC	100m	10.4	1928 Coast Lea 100 1st 10.0
1927 Glendale HS	220	21.0w	1928 CIF 100 1st 9.8
1928 Glendale HS	220	20.8m	1928 State 100 2nd ---
1929 Glendale JC	220	21.6	1927 Coast Lea 220 1tie 22.0
1930 USC	220	21.4	1927 CIF 220 1st 21.4
1931 USC	220	20.8	1927 State 220 1st 21.0w
1932 USC	220	21.2	1928 Coast Lea 220 1st 22.5
1927 Glendale HS	LJ	23-2	1928 CIF 220 2nd 21.6
1928 Glendale HS	LJ	23-1	1928 State 220 2nd 21.4
			1927 Coast Lea LJ 1st 22-9 1/4
			1927 CIF LJ 1st 23-2
			1927 State LJ 1st 22-5
			1928 Coast Lea LJ 1st 23-1
			1928 CIF LJ 4th 22-1

JC/Frosh

1929 SoCal JC 100 1st 9.8

College Division

1929 West Coast Rlys 100 1st 9.6

Open

1927 Jr AAU 100 1st 10.0

1928 AAU (Oly Trials) 100m heat 1st 10.6m

1928 AAU (Oly Trials) 100m quarter 1st 10.6

1928 AAU (Oly Trials) 100m semi 1st 10.6

1928 AAU (Oly Trials) 100m 1st 10.6

1928 SoCal Oly trials 100m 1st 10.6

1928 Olympics 100m heat 1st 11.0

1928 Olympics 100m quarrters 1st 10.8

1928 Olympics 100m semis 3rd 10.7

1928 Olympics 100m finals 4th 11.0

1928 Olympics 100m 4th

1929 AAU 100 4th ---

Open cont.

1930 PCC So Div 100 1st 9.7

1930 IC4A 100 1st 9.7

1930 NCAA 100 1st 9.4

1930 SPA AAU 100 1st 9.4

1931 PCC So Div 100 1st 9.5

1931 IC4A 100 1st 9.6

1931 NCAA 100 1st 9.6

1931 AAU 100 1st 9.5

1932 IC4A 100 1st 9.9

1932 AAU 100 5th ---

1932 Olympic Trials 100m 4th 10.7m

1936 Comp Invit 100m 3rd ---

1936 Olympic Trials 100m 3rd 10.7m

1936 Olympics 100m 4th ---

1928 SoCal Oly trials 200m 1st 20.8

1929 AAU 220 2nd ---

1930 PCC So Div 220 2nd ---

1931 PCC So Div 220 1st 20.8

1932 IC4A 220 2nd ---