

# JUNIOR COLLEGE SECTION

## 1957 Junior College Honor Roll

Outstanding marks for inclusion in the 1958 National Junior College Athletic Association Honor Roll should be forwarded to Earle J. Holmes, Director, NJCAA Service Bureau, Compton College, Compton, California, by May 26, 1958. In the rankings below the location of the college is in California, unless otherwise noted.

Non-winning times are indicated by an "w". Performances which were made with an assisting wind of more than 4.473 miles per hour are indicated with a "w".

| 100-YARD DASH              |           | ONE-MILE RUN             |           |
|----------------------------|-----------|--------------------------|-----------|
| Name, College              | Best Mark | Name, College            | Best Mark |
| Poynter, Pasadena          | 9.6       | Larriue, Mt. San Antonio | 4:15.7    |
| Engle, Murray State, Okla. | 9.6       | Adams, Compton           | 4:15.8    |
| Schick, Mt. San Antonio    | 9.7       | McGuire, Mt. San Antonio | 4:20.1    |
| Erickson, Mt. San Antonio  | 9.8       | Ward, Mt. San Antonio    | 4:23.6    |
| White, Mt. San Antonio     | 9.8       | Holmes, Weber, Utah      | 4:26.2    |
| Gentry, Perkinston, Miss.  | 9.8       | Brnham, Victoria, Tex.   | 4:26.9    |
| Brown, Oregon Tech         | 9.8       | Fuller, Howard, Tex.     | 4:27.1    |
| Land, Cisco, Tex.          | 9.8       | Draper, Victoria, Tex.   | 4:28.4    |
| Stuart, Howard, Tex.       | 9.8       | Eisenman, Bakersfield    | 4:28.8    |
| Hendershot, Glendale       | 9.8n      | Luedtke, Los Angeles CC  | 4:31.5    |
|                            |           | McMaster, Glendale       | 4:31.5n   |

| 200-YARD DASH               |           | TWO-MILE RUN              |           |
|-----------------------------|-----------|---------------------------|-----------|
| Name, College               | Best Mark | Name, College             | Best Mark |
| Poynter, Pasadena           | 20.5w     | Larriue, Mt. San Antonio  | 9:22.0    |
| Matta, Los Angeles CC       | 21.3n     | Adams, Compton            | 9:22.3n   |
| Flood, Tarleton State, Tex. | 21.4      | Eisenman, Bakersfield     | 9:22.7n   |
| Land, Cisco, Tex.           | 21.4      | Ward, Mt. San Antonio     | 9:34.0    |
| Du Frain, Victoria, Tex.    | 21.4      | McGuire, Mt. San Antonio  | 9:41.9    |
| Phillips, Bakersfield       | 21.4      | Hughes, Mt. San Antonio   | 9:44.0    |
| White, Mt. San Antonio      | 21.5      | Romero, Los Angeles CC    | 9:51.5    |
| Stuart, Howard, Tex.        | 21.5      | Trowbridge, Glendale      | 10:06     |
| Herkenrath, Citrus          | 21.6      | Brown, Scottsbluff, Nebr. | 10:12.6   |
| Erickson, Mt. San Antonio   | 21.7      | Hill, LaSalle-Peru, Ill.  | 10:13.8   |
| Schick, Mt. San Antonio     | 21.7      |                           |           |

| 400-YARD DASH             |           | 200-YARD HIGH HURDLES       |           |
|---------------------------|-----------|-----------------------------|-----------|
| Name, College             | Best Mark | Name, College               | Best Mark |
| Phillips, Bakersfield     | 47.8      | Singleton, Victoria, Tex.   | 14.5      |
| White, Mt. San Antonio    | 47.9      | Piggee, Pasadena            | 14.6      |
| Moore, Los Angeles CC     | 48.2      | Newby, Tarleton State, Tex. | 14.8      |
| Schreiner, Glendale       | 48.2n     | Jensen, Compton             | 15.0      |
| Domer, Citrus             | 49.0      | Allen, Mt. San Antonio      | 15.0      |
| Gerdes, Victoria, Tex.    | 49.0      | Bradley, Independence, Kan. | 15.0      |
| Smajstrla, Victoria, Tex. | 49.3      | Allegretti, Glendale        | 15.0n     |
| Crouse, Mt. San Antonio   | 49.4      | Hooker, Citrus              | 15.1      |
| Carmichael, McCook, Nebr. | 49.4      | Daniels, Cisco, Tex.        | 15.2      |

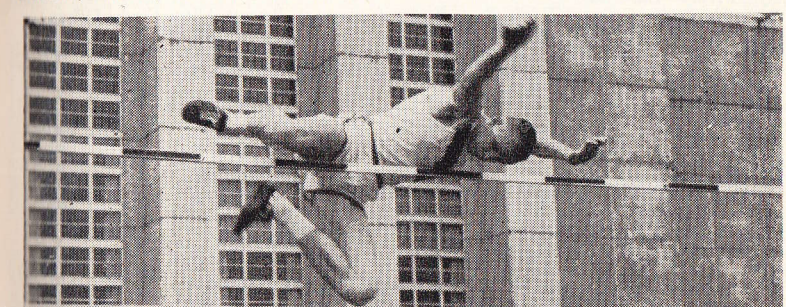
| 800-YARD RUN             |           | 200-YARD LOW HURDLES              |           |
|--------------------------|-----------|-----------------------------------|-----------|
| Name, College            | Best Mark | Name, College                     | Best Mark |
| Jordan, Mt. San Antonio  | 1:52.8    | Herkenrath, Citrus                | 23.4      |
| Knapp, Mt. San Antonio   | 1:54.3n   | Tave, Los Angeles CC              | 23.4n     |
| McMaster, Glendale       | 1:56.3n   | Singleton, Victoria, Tex.         | 23.4      |
| Larriue, Mt. San Antonio | 1:56.6    | Stuart, Howard, Tex.              | 23.5      |
| Allen, Hutchinson, Kan.  | 1:56.8    | Piggee, Pasadena                  | 24.0      |
| Ward, Mt. San Antonio    | 1:57.0    | Casselberry, Tarleton State, Tex. | 24.1      |
| Harrison, Compton        | 1:57.1n   | Dumas, Compton                    | 24.1n     |
| Nevarov, Bakersfield     | 1:58.0    | Logan, Glendale                   | 24.2      |
| Davis, Bakersfield       | 1:58.1    | Allen, Mt. San Antonio            | 24.3      |
| Roberts, Citrus          | 1:58.2    | Taylor, Victoria, Tex.            | 24.5      |

| SHOT PUT               |           | POLE VAULT                |           |
|------------------------|-----------|---------------------------|-----------|
| Name, College          | Best Mark | Name, College             | Best Mark |
| Morgan, Ventura        | 52' 2¼"   | Allen, Mt. San Antonio    | 13' 7"    |
| Johnson, Compton       | 51' 11"   | Broom, Bakersfield        | 13' 6"    |
| Jennings, Compton      | 51' 2¾"   | Finch, Citrus             | 13' 1"    |
| Provost, Bakersfield   | 49' 1"    | Harris, Los Angeles CC    | 13'       |
| Byrd, Cisco, Tex.      | 47' 11"   | Sheetz, Glendale          | 13'       |
| Mead, Mt. San Antonio  | 47' 10"   | Black, Howard, Tex.       | 12' 8"    |
| Breckheimer, Glendale  | 47' 9"    | Thorp, Compton            | 12' 6"    |
| Rogers, Victoria, Tex. | 47' 8"    | Edwards, Ventura          | 12' 6"    |
| Kates, Los Angeles CC  | 46' 1½"   | Olsen, Weber, Utah        | 12' 3"    |
| Hooker, Weber, Utah    | 45' 5"    | D'Angelo, Fairbury, Nebr. | 12' 1¾"   |

| DISCUS THROW            |           | JAVELIN THROW              |           |
|-------------------------|-----------|----------------------------|-----------|
| Name, College           | Best Mark | Name, College              | Best Mark |
| Jennings, Compton       | 168' 6¾"  | Chapman, Phoenix, Ariz.    | 202' 7"   |
| Pyde, Mt. San Antonio   | 151' 4¾"  | Schlupp, Weber, Utah       | 190'      |
| Provost, Bakersfield    | 147' 7½"  | Butz, McCook, Nebr.        | 189' 6"   |
| Johnson, Compton        | 146' 10"  | Mead, Mt. San Antonio      | 187' 7½"  |
| Stellern, Pasadena      | 145' 5"   | Green, Citrus              | 176' 10"  |
| Rogers, Victoria, Tex.  | 143' 3½"  | Thompson, Victoria, Tex.   | 175' 11"  |
| Kinnaman, Compton       | 142' 8½"  | Bassett, Hutchinson, Kan.  | 175' 2"   |
| Morgan, Ventura         | 142' 4½"  | Reynolds, Hutchinson, Kan. | 174' 9½"  |
| Chapman, Phoenix, Ariz. | 138' 6"   | Martin, Holmes, Mass.      | 174'      |
| Fasten, Oregon Tech     | 138'      | Harbacek, Hutchinson, Kan. | 173' 7½"  |

| HIGH JUMP                  |           | 440-YARD RELAY           |           |
|----------------------------|-----------|--------------------------|-----------|
| Name, College              | Best Mark | Name, College            | Best Mark |
| Williams, Los Angeles CC   | 6' 7¼"    | Cisco, Tex.              | 42.4      |
| Morris, Mt. San Antonio    | 6' 5¾"    | Victoria, Tex.           | 42.6      |
| Dumas, Compton             | 6' 5¼"    | Los Angeles City College | 42.7      |
| Finch, Citrus              | 6' 4½"    | Glendale                 | 42.7      |
| Garrett, Ventura           | 6' 4¼"    | Mt. San Antonio          | 42.7      |
| Smith, Bakersfield         | 6' 4"     |                          |           |
| Davidson, Hutchinson, Kan. | 6' 4"     |                          |           |
| Haase, Glendale            | 6' 2"     |                          |           |
| Beimler, Oregon Tech       | 6' 2"     |                          |           |

| BROAD JUMP                     |           | 800-YARD RELAY           |           |
|--------------------------------|-----------|--------------------------|-----------|
| Name, College                  | Best Mark | Name, College            | Best Mark |
| Morris, Mt. San Antonio        | 24' ¼"    | Los Angeles City College | 1:26.4    |
| Plenty, Los Angeles CC         | 23' 7"    | Citrus                   | 1:27.6    |
| Tave, Los Angeles CC           | 23' 5¾"   | Pasadena                 | 1:27.9    |
| Nazaroff, Mt. San Antonio      | 23' 4"    | Glendale                 | 1:28.4    |
| Wuthrich, Victoria, Tex.       | 23' 3¼"   | Compton                  | 1:28.6n   |
| Poe, Ventura                   | 23' 2"    |                          |           |
| Webster, Arlington State, Tex. | 22' 10¼"  |                          |           |
| Vaughn, Hutchinson, Kan.       | 22' 9"    |                          |           |
| Perazzi, Eveleth, Minn.        | 22' 6½"   |                          |           |



THE PROCEDURE OF RECORD MAKING IS VIVIDLY DEMONSTRATED BY Al Urbanckas of Illinois as he clears the bar for a new Western Conference high jump mark. His leap of 6 feet, 8¾ inches erased the old standard of 6 feet 7¼ inches.

**1957 California JC additions to Honor Roll**  
(Source: Track and Field News, December 1957)

|                         |                          |                   |                            |
|-------------------------|--------------------------|-------------------|----------------------------|
| <b>100</b>              |                          | <b>High Jump</b>  |                            |
| 9.4                     | White (LA Harbor)        | 6-7¼              | Washington (East LA)       |
| 9.5                     | Dennis (LA Valley)       | 6-5½              | Chappell (LA Harbor)       |
| 9.7                     | Mattea (LA City)         | 6-5½              | Gaspar (CCSF)              |
| 9.5w                    | Kellogg (American River) | 6-5¼              | Wilbon (West Contra Costa) |
| <b>220</b>              |                          | <b>Pole Vault</b> |                            |
| 20.7                    | Kellogg (American River) | 14-4½             | Hopkins (Orange Coast)     |
| 21.0w                   | Fischl (Long Beach)      | 13-11             | Dick (Sequoias)            |
|                         |                          | 13-11             | Haymond (Santa Ana)        |
| <b>440</b>              |                          | 13-11             | Hartsell (Hartnell)        |
| 48.3                    | Dorsey (Sac City)        | 13-8              | Peters (Long Beach)        |
|                         |                          | 13-6              | Wimmer (Fresno)            |
| <b>880</b>              |                          | <b>Long Jump</b>  |                            |
| 1:53.2                  | Gaspari (Modesto)        | 24-0½             | Cook (LA Harbor)           |
| 1:53.8                  | Winger (Modesto)         | 23-10½            | Wilkins (LA Valley)        |
| 1:54.1                  | Howell (Vallejo)         | 23-8              | Calloway (Long Beach)      |
| 1:54.9                  | Kershaw (Santa Ana)      |                   |                            |
| <b>Mile</b>             |                          | <b>Shot Put</b>   |                            |
| 4:20.1                  | McGuire (Mt. Sac)        | 54-8½             | Robertson (SBVC)           |
|                         |                          | 51-10½            | Volen (East LA)            |
| <b>2 Mile</b>           |                          | 51-7              | Humphrey (Porterville)     |
| 9:22.8                  | Matravers (Modesto)      | 51-5¼             | Pike (Santa Monica)        |
|                         |                          | 50-10             | Vissel (Orange Coast)      |
| <b>120 High Hurdles</b> |                          | <b>Discus</b>     |                            |
| 14.4                    | Fischl (Long Beach)      | 162-1             | Volen (East LA)            |
| 14.5                    | Cook (LA Harbor)         | 161-8             | Vissel (Orange Coast)      |
| 14.6                    | Younger (Fullerton)      | 153-4             | Robertson (SBVC)           |
| 14.6                    | Goodings (Sac City)      | 150-5             | Ross (Santa Rosa)          |
| 14.6                    | Wilkins (LA Valley)      | 150-2             | DiRenzo (San Jose)         |
| 14.7                    | Jackson (Sequoias)       | 150-1             | Eller (Fresno)             |
| 14.7                    | Owens (Fullerton)        | 148-0             | Humphrey (Porterville)     |
| <b>220 Low Hurdles</b>  |                          | <b>Javelin</b>    |                            |
| 22.6                    | White (LA Harbor)        | 188-6             | Zielonka (Santa Ana)       |
| 22.9                    | Fischl (Long Beach)      | 185-0             | Younger (Fullerton)        |
| 23.5                    | Austin (Modesto)         |                   |                            |
| 23.7                    | Messer (Sequoias)        |                   |                            |
| 23.8                    | Battle (East LA)         |                   |                            |